

Incheon Specialist Program

INCHEON
& PARTNERS

The Mecca of Leisure and Tourism with World-class Airport Facilities

Yeongjongdo Island & Muuido Island

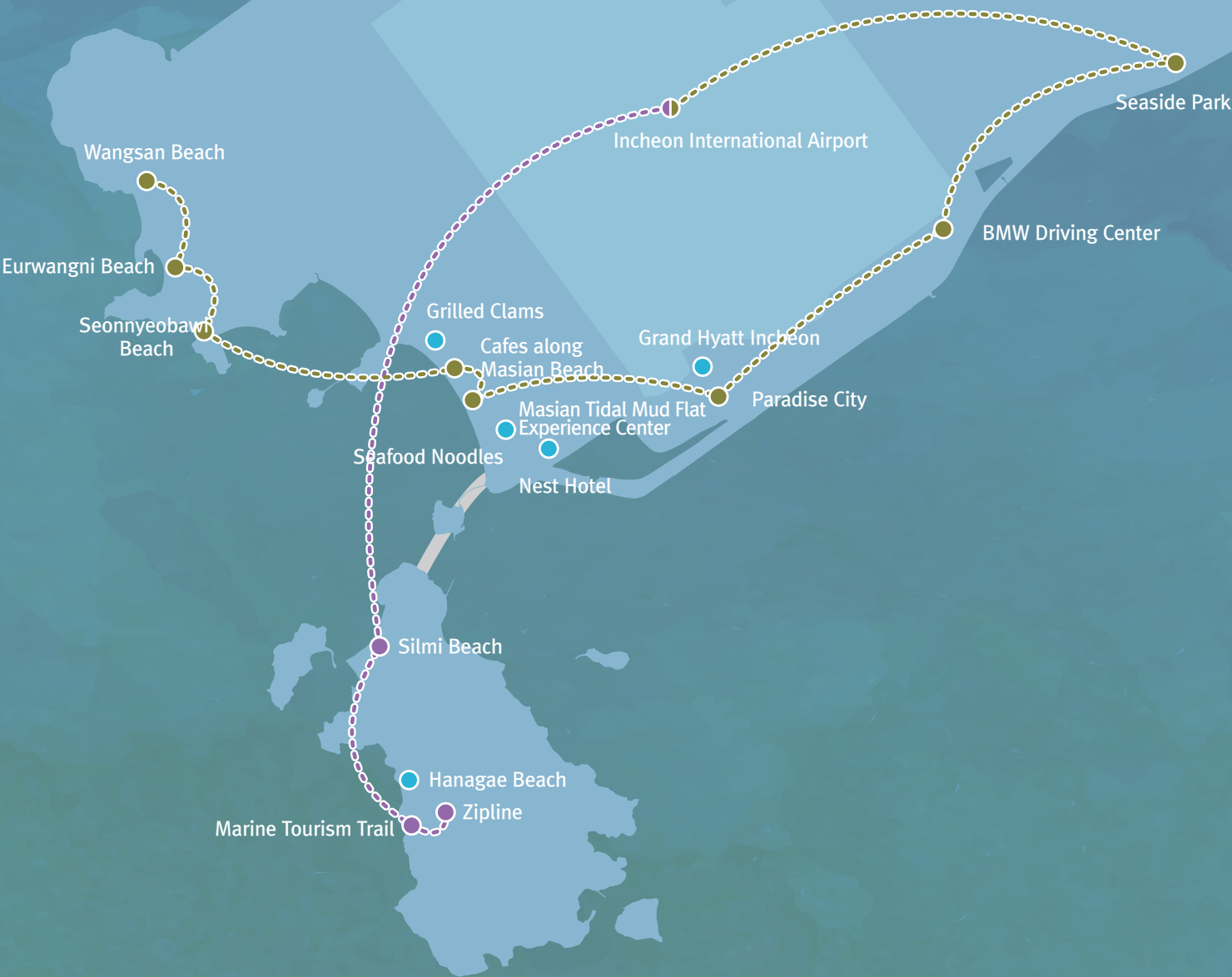
Absolutely stunning gigantic scale will make your breath away!
Experiences you have never dreamed of are waiting to amaze you!

Your fantasies will come to life
as Yeongjongdo Island and Muuido Island's special stories unfold.

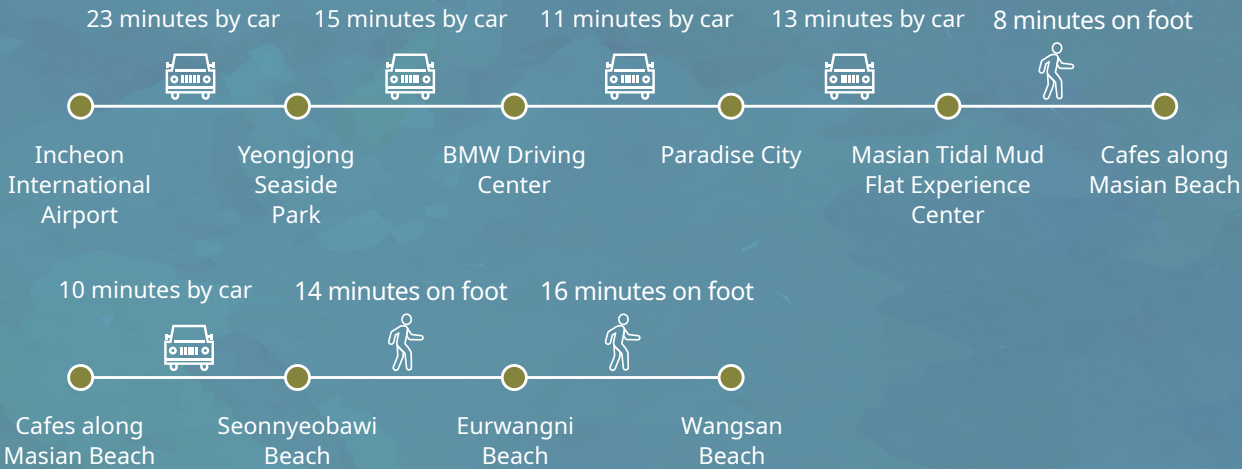
Leisure complex



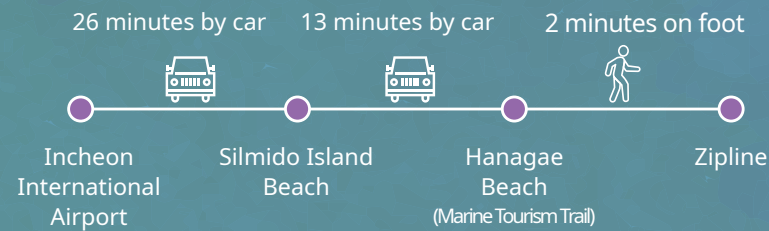
Road Maps for Yeongjongdo Island & Muuido Island



Yeongjongdo Island Courses



Muuido Island Courses



Enjoying life on Yeongjongdo Island and Muuido Island in the new normal.
Reading **'Experiences'** from Spaces

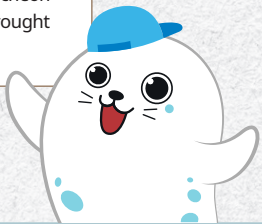


Yeongjongdo Island

Yeongjongdo Island can be reached by plane, by land (through Yeongjong Bridge and Incheon Bridge), and by boat (from Wolmido Island). Its easy accessibility leaves you to wonder whether the island can really be called an 'island' at all, boasting multiple routes of entry by sky, land, and sea. For international visitors, Yeongjongdo Island constitutes the first step taken into Korea, as well as the last 'face' seen upon departure. It is indeed a place that offers special inspiration to anyone and everyone.

Hidden Story

Being rich with swallows, Yeongjongdo Island used to be called 'Jayeondo Island (lit. Purple Swallow Island).' It is an artificial island formed by reclaiming the shallow seas between Yongyudo Island, Sammokdo Island, and Sammokdo Island with embankments. The reclamation project was started with the land-expansion construction project, coinciding with the construction of Incheon International Airport, the result of which brought substantial expansion of the area (63.81 km).

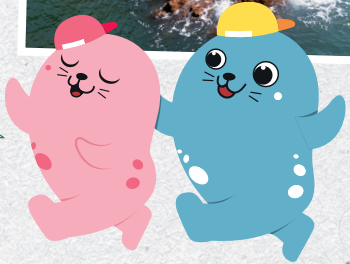


Muuido Island

As an island very close to shore, Muuido Island could always be easily reached by boat from Jamjindo Island Wharf. Once the Muui Bridge was built, however, it also became accessible by car. The island is now open to anyone short on travel time or those who get seasick easily, meaning it has become much more attractive as a travel destination. The scenes taken in while hiking to and from Guksabong Peak (230 m) and Mt. Horyonggoksan (244 m) are especially famed for the green beauty they present. At night, it is also a great place to enjoy the gorgeous expanse of sky made all the more splendid by the lights of Incheon International Airport.

Hidden Story

There are several stories regarding the origin of the name 'Muuido Island.' According to some people, the island is named for its shape that resembles a general with a helmet and armor, doing a sort of sword dance. Others say that the name comes from a certain phenomenon on foggy days, when the island resembles a general riding a horse with his jacket blowing in the wind. Lastly, there are those who claim that the island looks like a woman dancing, or that the word 'muui' was a mistakenly interpreted Chinese word from the Korean 'muri' or 'group.'



Let's meet some friends to accompany you on your journey!

My name is Ainy.

I am a very curious Larcha seal living in the waters off Incheon. I'm outgoing and I love traveling and taking photographs.

Hi, my name is Comy.

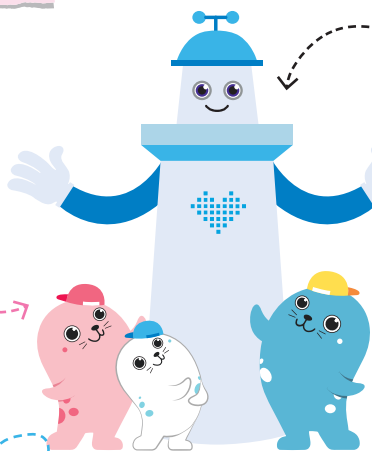
I'm a seal pup. My nicknames are 'Cheokcheok Baksa (Dr. Know-It-All)' and 'Meokbo (Glutton).'

My name is Daery, short for Deungdaery.

I tend to wear my heart on my sleeve and simply can't hide how I truly feel. I'm also a flat-out addict of Korean dramas.

My name is Bumy, a brave Larcha seal.

I enjoy adventure travel, though I'm not that good at following directions and often get lost.



INCHEON INTERNATIONAL AIRPORT

Traveling becomes art
at Incheon International
Airport.

Incheon International Airport represents different things to different people for foreign visitors, it delivers their first impression of South Korea for South Koreans, it acts as the gateway to the world and for the people of Incheon, it is a source of pride for its title as ‘the world’s best airport.’ Shall we look more at the details of this grand symbol for Incheon - Incheon International Airport - located in Yeongjongdo Island?

TRAVEL,
BECOMES ART

Incheon International Airport opened on March 29, 2001, following almost 8.5 years of construction, beginning with reclaiming the sea between Yeongjongdo Island and Yongyudo Island in 1992. It has since gone on to be ranked first in the world for Airport Service Quality (ASQ) for 12 years running. It can be safely said that Incheon International Airport has now been positioned as the world standard for a hub airport. As if that weren’t enough, Incheon International Airport has gone on to make additional investments of five trillion Korean won for more airport infrastructure from 2009 until 2017. This culminated with the unveiling of Terminal 2. Now, just three years after its opening, Terminal 2 has also been recognized for its value, winning World’s Best Airport Terminal and World’s Best Transit Airport at the 2020 World Airport Awards, organized by Skytrax, a British organization. Even at this moment, Incheon International Airport is in the process of finalizing endeavors for future development.

Classification	International airport
Year of establishment	2001
Site Area	56,198,600m ²
Runways	3
linear content	3750m
Width	60m
Thickness	105cm




Incheon International Airport at a Glance

1st ASQ for 12 consecutive years	19 years of service since its establishment (in 1999)	328,399 flights	84 airlines
55 countries for outbound flights	185 cities for outbound flights	1230 employees	56,527,379 passengers serviced

Facilities

Passenger Terminal	Cargo Terminal
Apron Facilities	NAVID
Transportation Facilities	

Passenger Terminal

 270 Check-in Counters	 120 Immigration Counters
 28 Security Checkpoints	

Hidden Story

Korean Traditional Cultural Experience Center	Located on the 3rd floor of Terminals 1 and 2. Experience traditional crafts, watch traditional cultural performances, and buy craftworks made of Korean paper (hanji) or porcelain masterpieces made by major Important Cultural Heritage holders.
Museum of Korean Culture	Located in the newly opened Concourse (4th floor). Topics for its major exhibitions include Korean court culture, traditional art, traditional music, and printing culture.
Traditional Handicraft Exhibition Hall	Located in the Transfer Lounge on the 5th floor of the Passenger Terminal. Items representing traditional Korean culture and art are exhibited in the Traditional Handicraft Exhibition Hall.
Korean Cultural Street	Located on the 4th floor in Terminal 1. This is a venue to enjoy Korea’s beautiful nature while learning about dynamic and warm historical Korean figures, along with over 5,000 years of splendid culture displayed through excellent photography and traditional handcrafted wooden furniture.

Travelers are provided with special enjoyments at Incheon International Airport in spaces designated for experimenting with Korean culture.



LEISURE COMPLEX
+ Yeongjongdo Island&Muuido Island



A space travelling
between reality and
imagination



Paradise City

Opening in April 2017, Paradise City is the first complex resort space in Northeast Asia to offer such a wide variety of entertainment activities in a single place. Over 3,000 artworks are displayed for a variety of performances offering both pleasure and excitement. Built on an area of 99,825 pyeong, its world-class facilities are at your disposal, including a hotel, plaza, restaurants, clubs, spa, and casino (exclusive to foreigners). From Incheon International Airport, Paradise City can be reached in just three minutes with the Incheon Airport Maglev Line or in about 10 minutes on foot. By taking the Airport Railroad or KTX, Paradise City is roughly 40 minutes away from Seoul Station and Seoul's central area.

Paradise City Korea

- 186, Yeongjonghaeannam-ro 321beon-gil, Jung-gu, Incheon (Unseo-dong)
- +82-1833-8855

INCHEON
& PARTNERS

A place for fun of a different kind! 'Chroma'

Nightlife Destination Chroma is a club facility geared toward adults. Its unique facade - as if the golden sun were melting down - was designed by noted architectural group MVRDV. As the largest club in Asia, Chroma can accommodate up to over 3,000 people. It offers four different thematic music stages, arranged by floor: Music Lounge on the first floor, 1st Stage and 2nd Stage on the second, VIP Zone on the third, and Beach Club on the fourth. Special events can also be arranged in connection with Chroma Field.

Chroma

- 1F(Music Lounge), 2F(1st Stage&2nd stage)
3F(VIP ZONE), 4F(Beach Club)
Operated in line with scheduled performances.

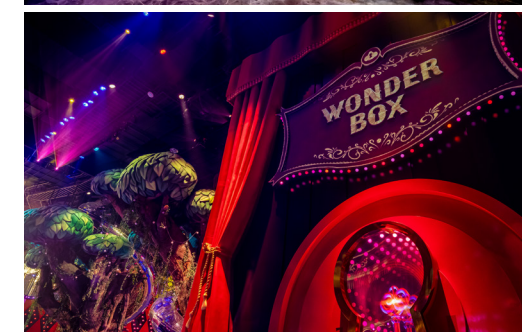


A most exciting theme park, filled with items to grab your attention 'Wonderbox'

Come and see Wonderbox for yourself - a fantastic space on an area of about 1,200 pyeong, named as the best theme park in the world. Besides amusement facilities, Wonderbox also provides plenty of fun with its regular performances offering a variety of delights. Enjoy the mystique of its atmosphere that will make you feel like a character in a fantasy novel, or take on the thrills of Korea's best amusement-park rides. From photo zones scattered all around to exotic foods and more, virtually everyone - young or old - will fall in love with Wonderbox.

Wonder box

- One-day Pass
Adult : KRW 28,000 / Child : KRW 20,000
(3Children from 37 months to 13 years old)
- Carnival game pass
1 Game : KRW 3,000 3 Game : KRW 7,000
6 Game : KRW 13,000 9 Game : KRW 17,000
- It is mandatory to purchase a One-day Pass for admission. One-day Passes can be purchased via the Wonderbox website, the ticket office inside the Plaza, or at on-site ticket counters and automatic ticket dispensers.





LEISURE COMPLEX
+ Yeongjongdo Island&Muuido Island

A new spa concept centered on healing power for the body and mind ‘Cimer’

High-standard spa, Cimer Trendy and luxurious, the Aqua Spa Zone is more than just a swimming pool; it is a dynamic space where LED media art meets a differentiated pool-party concept. Perfectly customized for guests’ needs, the multi-faceted facilities offer a K-style destination spa that melds European sentiments with Korea’s indigenous jjimjilbang spa culture. You are invited to rest and relax in the healing spaces provided alongside weekly pool parties and various themed facilities for relaxation.

- Cimer
- Aqua Spa Zone

[Off Season]

Monday through Friday: 10 a.m. to 7 p.m.

Saturday and Sunday: 10 a.m. to 10 p.m.

[In Season] 10 a.m. to 10 p.m.
 - Jjimjil Spa Zone

Sunday through Thursday: 8 a.m. to 12 a.m. (midnight)

Friday, Saturday, and days before a public holiday:

Open 24 hours
 - Hours of admission for adolescents at Aqua Spa Zone may vary according to on-site circumstances, such as pool parties for adults or performances by hired contractors.

The largest K-Style premium casino in Korea, exclusive to foreigners ‘Casino’

Paradise City Casino is a premium gaming venue and Korea’s largest in scale. With professional knowhow and premium services catered through its over 40 years in operation, Paradise City Casino offers different special events each day, ensuring the best experiences for its guests. It is especially recommended for travelers seeking unusual pleasures.

- Casino
- Information for Use

+ Paradise City Casino is open 24 hours a day, 365 days a year.

+ Exclusive to foreigners. Minors and Korean nationals are not admitted.

+ Guests must have passports for identification of nationality.

+ Guests may dress casually; however, shorts, jerseys, and sandals may not be permitted if they are deemed inappropriate attire.



Incheon International Airport’s nearest 5-star hotel **Grand Hyatt Incheon**

Offering world-class services along with an ambience that mixes Eastern and Western culture and design, Grand Hyatt Incheon boasts a total of 1,024 excellently furnished guest rooms, including regular rooms, suites, and residences. Grand Hyatt Incheon also boasts excellent accessibility, with its location only a 15-minute walk from Exit 2 of Incheon International Airport Station on the Airport Railroad. Nearby, there are tourist attractions, as well, such as Incheon Bridge, accessible in 10 minutes by car, and Masian Beach on Yeongjongdo Island, about 15 minutes by car. Besides this, the hotel offers supreme services to its guests: 24-hour room service, valet parking, and express check-in/check-out.

- Grand Hyatt Incheon
- 208, Yeongjonghaeannam-ro 321beon-gil, Jung-gu, Incheon
 - +82-32-745-1234



An orthodox form of comfort, a restive place for casual travelers **Nest Hotel**

Nest Hotel, with its infinity pool offering warm water 365 days a year, earned its place as one of the 317 Design Hotel members through its stringent judgment criteria. It is located about two minutes on foot from Exit 1 of Yongyu Station on the Incheon Airport Maglev Line. With free shuttle buses operated from Terminal 1 and Terminal 2 of Incheon International Airport, easy access is yet another advantage of this hotel. As for nearby tourist attractions, a five-minute car ride will bring you to Jamjindo Island Wharf, from which you can reach Muuido Island, while a 20-minute car ride will get you to Eurwangni. In addition, Nest Hotel is famed for its restaurants serving many international foods.



- Nest Hotel Incheon
- 19-5, Yeongjonghaeannam-ro, Jung-gu, Incheon
 - +82-32-743-9000

Other places to stay

Western Grace Hotel	36, Eunhasu-ro 29beon-gil, Jung-gu, Incheon	+82-32-717-0000
Howard Johnson Incheon Airport	6, Sindosinam-ro 142beon-gil, Jung-gu, Incheon	+82-32-722-0000
Hotel ORA	345, Gonghangseo-ro, Jung-gu, Incheon	+82-32-752-8080
Hotel Incheon Airport	11, Sindosinam-ro 149beon-gil, Jung-gu, Incheon	+82-32-752-2066
Hotel Air Relax	7, Sindosinam-ro 149beon-gil, Jung-gu, Incheon	+82-32-745-3800
Airport Stay	72, Gonghang-ro 424beon-gil, Jung-gu, Incheon	+82-32-746-0070



A space to design speed

BMW Driving Center

In 2014, BMW Driving Center opened in Yeongjongdo Island and quickly caught the world’s attention. As a culture complex where you can experience virtually all this global automaker has to offer - on a site of 240,000 m² (or some 33 soccer fields) - BMW Driving Center is the ideal place to experience the most intensive performance without venturing far from the city. The center is composed of various tracks to enjoy driving, along with exhibit halls, event halls, a junior campus, and comfortable places to rest. Besides the driving experiences of racing the cars on your very own track, there are a variety of things to enjoy while engaging in activities or simply watching from the sidelines - all of which are worthy of tourists’ attention. The center is not just geared toward adults, as there are programs for children, as well, such as the Junior Campus and Kids Driving School.

- BMW Driving Center**
 - 📍 136, Gonghangdong-ro, Jung-gu, Incheon
 - 🕒 Hours of Operation
 - Brand Experience Center: 9 a.m. to 6 p.m.
 - Driving Program: 9 a.m. to 6 p.m.
 - Lifestyle Shop: 9 a.m. to 6 p.m.
 - Cafe o'slo: 9 a.m. to 6 p.m.
 - Service Center: 9 a.m. to 6 p.m.
 - Guided Tour: 9 a.m. to 6 p.m.
 - Terrasse Restaurant: 11 a.m. to 6 p.m.
 - ℹ Information for Use
 - + BMW Driving Center is closed on Mondays, Lunar New Year's Holidays, and Korean Thanksgiving Holidays.
 - + Hours of operation are extended by one hour (to 7 p.m.) on Fridays and Saturdays from June to September.
 - ☎ +82-80-269-3300



The landmark of Yeongjong, with exotic natural scenery stretching as far as the eye can see

Seaside Park

A landmark of Yeongjong, Yeongjong Seaside Park creates harmony with the mud flat made by the ebb and tide and the magnificent background of the Yellow Sea at twilight. The park also has a variety of great facilities to offer, including artificial waterfalls, an outdoor stage, sculptured fountains, an observatory, and sculptures - not to forget the athletic facilities and playground. It is a place to enjoy the variety of things to see and the view of the open sea at the same time. This natural park encourages visitors to improve their quality of life with nature, to make the most of the opportunity to rest while surrounded by greenery, and to take part in a bit of heartfelt play, all together.

Seaside Park

6, Haneuldalbit-ro 2beon-gil, Jung-gu, Incheon

Rail Bike Hours of Operation

January - February, November - December :
10 a.m. to 5 p.m.

March - October : 9 a.m. to 6 p.m.

+82-32-719-7778



A rail bike experience to enjoy with family and lovers 'Rail Bike'

Inside Yeongjong Seaside Park as an attraction emerging in Yeongjongdo Island, Yeongjong Seaside Rail Bike facility is located, offering up to four passengers a ride along 5.6 km (traveling to and from) of seaside track. The unobstructed view of the coast lying just before your eyes from Wolmido Island to Incheon Bridge presents memorable sights for all visitors. With the falls and various facilities installed along the way, the pleasures just keep multiplying. Come and enjoy the panoramic view of magnificent scenery on offer.

Doubled joy of enjoying the rich marine ecosystem Masian Tidal Mud Flat Experience Center

Masian Beach is Korea's largest mud flat experiential site, enjoyed by tens of thousands of people every year. Located close to the metropolitan area, Masian Beach boasts international recognition for its value as a place to experience the mud flat biosystem and its well-preserved marine ecosystem. Besides the mud flat itself, there are a variety of experiential programs for groups to join, such as hand fishing, school fieldtrip programs to experience nature, and programs for local governments or business firms. The programs and scenery make this tidal flat another recommended site for travelers.

A venue for experiencing salt production and observing living creatures 'Salt Flat Experience'

Restoring the former 'Geumhong Salt Flat,' which had been closed down, the Yeongjong Park Project Team has succeeded in reviving this functional salt flat. In addition, it has formed salt plant beds, including for hamcho (Salicornia herbacea L.), and a photo zone, all for visitors to enjoy the ecological resources inside the park, alongside experiential programs - free of charge since 2018. These programs are operated twice a day from Monday through Friday (closed on public holidays), in the morning and afternoon, open for 1 to 10 people per session.

Salt Flat Experience Program

Duration : Part 1: 10:00 a.m. to 11:30 a.m. / Part 2: 2:30 p.m. to 4:00 p.m.)

Information for Use

+ Operation Period : April through October
(Closed on Saturdays, Sundays, and public holidays)

+ How to apply : Registration is admitted online through the homepage up to three days before the program date.

+ How to reserve : Membership registration through the homepage - Online Application - Confirmation of approval and notice - Application confirmed

+ Note : Capacity for online applications: 1 to 10 people

+82-32-456-2983



Masian Tidal Mud Flat Experience Center

107-8, Masiran-ro, Jung-gu, Incheon

Mud Flat (Shell Gathering) Experience :

Argo Experience

Mud Flat Wagon : Goby Hand Fishing

Business Firm & Group Workshops : Fishing

+82-10-6855-3223



Enjoying the breathtakingly beautiful glow of the setting sun **Eurwangni Beach**

Located in Eurwang-dong, Jung-gu, Incheon, Eurwangni Beach is also called 'Neulmok' or 'Eolhang.' It was designated as a National Tourist Site in 1986. This means that it is generally packed with people gathering in the summer months to bathe in the sea. Its sandy beach stretches out over 700 meters, with an average sea depth of 1.5 meters, providing a good area of beach to enjoy. The beautiful sunset glow, for which the beach is famed, may have you wishing for the power to stop time, but this complex site offers various other activities to enjoy, including sunbathing, sports, and fishing. Nearby camping sites include Yongyudo Island, Evergreen Auto Campsites, Red Land Auto Campsites, Yongjongdo Island Yongyu Pinery, and Masiran Campsites.



Eurwangni Beach
📍 16-15, Yongyuseo-ro 302beon-gil, Jung-gu, Incheon
☎ +82-32-746-4112
💰 There is a KRW 5,000 set-up charge per tent (for waste disposal fees).

A leisurely beach for all to enjoy, regardless of age or gender **Wangsan Beach**

Wangsan Beach's low, sloping layout allows children to enjoy the beach in safety. The water is clear and good for fishing, as well. Just five minutes over the hill from Eurwangni, Wangsan Beach brings a pleasant change of environment. Wangsan has the quiet and easy-going scenery typical of a coastal village, while the wide stretch of sand along the immense beach makes it a nice spot for camping, too. The glow of the setting sun over Wangsan and along the salt flat is so beautiful that it is listed as one of the Eight Scenic Views of Yongyu. At low tide, when the sea withdraws, the mud flat reveals itself, offering a special 'playground of mud' for indulging in a mud massage or digging for shells and clams.



Wangsan Beach
📍 Eurwang-dong, Jung-gu, Incheon Metropolitan City (Wangsan Beach)
☎ +82-32-461-0404

A place where a sad legend and crystal- clear scenery mingle in harmony **Seonnyeobawi Beach**

There is a sad tale that has long surrounded Seonnyeobawi. According to legend, a general in command of the naval forces in Yeongjongjin had a concubine. Their love did not last, and the concubine then threw herself into the sea from the top of the rock called Taepyeongam in Yeongjongjin. With no one to take care, the body of the concubine was sent adrift all the way to the port of Yongyudo Island. Upon hearing the news, the general regretted his negligence and moved to bury her body. Later, Taepyeongam, the rock from which the concubine had thrown herself, was renamed as 'Seonnyeobawi,' or the rock of a heavenly fairy. It is said that, on clear nights, many fairies descend in a rainbow to play there. Another story states that people believed that praying before this rock, which looked like a praying woman, would ensure that their wishes were answered. No matter what the legend says, Seonnyeobawi Beach is a place free from any effects of fine dust or other pollution, and cooking is allowed.



Seonnyeobawi Beach
📍 Eurwang-dong, Jung-gu, Incheon (Seonnyeobawi Beach)
☎ +82-32-760-7532





The thrill of flying through the sky in the midst of nature's gifts
Hanagae Beach – Zipline

Hanagae Zipline offers a new kind of extreme sport that takes you along a course that is 413 meters long and 25 meters high at speeds of 49~60 kilometers per hour. It is a famed element for Muuido Island, featured in various broadcast programs across Korea. Enjoy the thrilling pleasure of flying through the sky, all with a view of the endless stretch of the Yellow Sea along Hanagae Beach, ranked as one of the 20 best beaches in Korea.

Sea Sky World Zipline

- 📍 144-3, Hanagae-ro, Jung-gu, Incheon
- 🕒 Hours of Operation
June - September: 8 a.m. to sunset
Other times: 9 a.m. to sunset
(Open every day, throughout the year)
- ☎ +82-32-746-6886 / +82-10-5260-5767



The path to the stairway to Heaven
Hanagae Beach

Hanagae means 'huge mud flat.' At low tide, the mud flat here stretches out immensely to go beyond the beach of flour-like fine sand. Because of its mild slope and fine sand, Hanagae Beach has become a popular spot for vacationing families. As it opens its mud flat to the public, which is a rarity for a beach, it is frequented by tourists interested in digging for shells. It is also known as the shooting location for the drama 'Stairway to Heaven.'

Silmi Beach

Silmi Beach is located 10 minutes by boat from Yeongjongdo Island. Twice a day, at low tide, the wide mud flat spans out and makes it possible to walk from Silmi Beach to Silmido Island. Silmi Beach is named such for the fact that it is connected to Silmido Island twice a day. There is enough space to accommodate over 100 tents in the pinery along the beach.

Silmi Beach

- 📍 136-49, Muui-dong, Jung-gu, Incheon
- 🕒 Hours of Operation : 9:00 a.m. to 7 p.m. every day
- 💰 Price : Camping Fee : KRW 5,000
- ☎ +82-32-752-4466

Hanagae Beach

- 📍 Muui-dong, Jung-gu, Incheon (Hanagae Beach)
- ☎ +82-32-751-8833
- 📍 Perfect camping facilities are installed on the site.

Walking on the sea with extraordinary scenery
Hanagae Beach – Marine Tourism Trail

The Marine Tourism Trail in Muuido Island is a bridge formed from wooden planks that runs 550 meters long, 2 meters wide, and 5 meters high. Thanks to this bridge crossing over the sea, visitors can feel as if they are really walking on the sea, which is why the bridge is so beloved by so many people. You can enjoy the waves breaking as the sea strikes Horyonggoksan's cliffs at high tide, or the fresh experience of scrounging for mysteriously shaped rocks at low tide.



Yeongjong-Muuido Food



Grilled Clams

Once you reach Yeongjong or Muuido Island, there is one thing that you must not miss out on: grilled clams. There is even a separate alley devoted to grilled clams. Take advantage of your time near the Yellow Sea and eat to your heart's content as you enjoy everything the sea has to offer!



Seafood Noodles

The seafood noodles are served with generous portions of a variety of seafood, making this a famed delicacy of Yeongjong and Muuido Island. The chewy noodles and refreshing broth are served at a reasonable price, too! There are lots of restaurants open for you to enjoy the fun of making a choice of your favorite.



Cafes along Masian Beach

How does sipping on a cup of coffee in the cool sea breeze sound to you? If you've already enjoyed a walk on the mud flat or along the sandy beach, then perhaps you'll want to fill your empty stomach and enjoy some tea or coffee at a cafe overlooking the beach around sunset. Wouldn't that make for the perfect end to your day?



INCHEON & PARTNERS