

Incheon Specialist Program

INCHEON
& PARTNERS

The First Meeting with Your Dream Islands — Paradise in Incheon

Incheon's Treasure Islands

168 Islands Belonging to Incheon
Exotic Landscapes Unwrapped over a Constellation of Islands

A paradise on earth with shouts from the sky, the mountains, and the sea;
enjoy the gift of nature on the islands of Incheon.

Treasure Islands



인천광역시
Incheon Metropolitan City

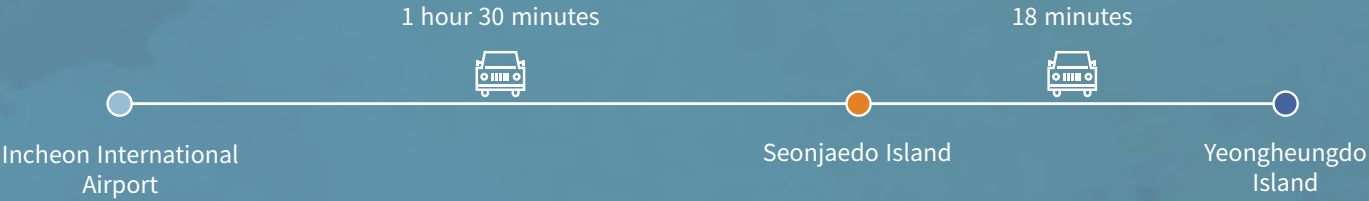


인천관광공사
Incheon Tourism Organization

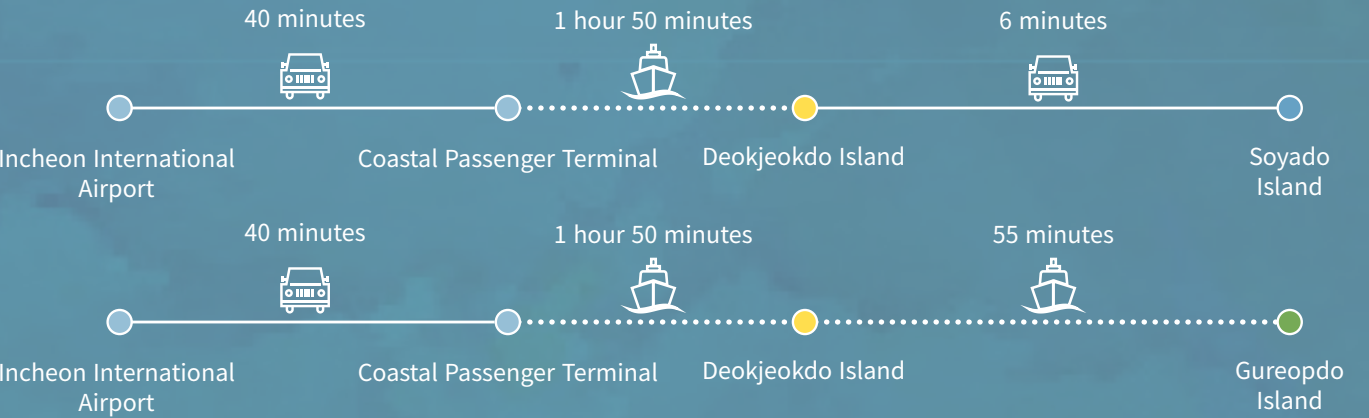
The Islands of Incheon Road Map



Seonjaedo Island and Yeongheungdo Island



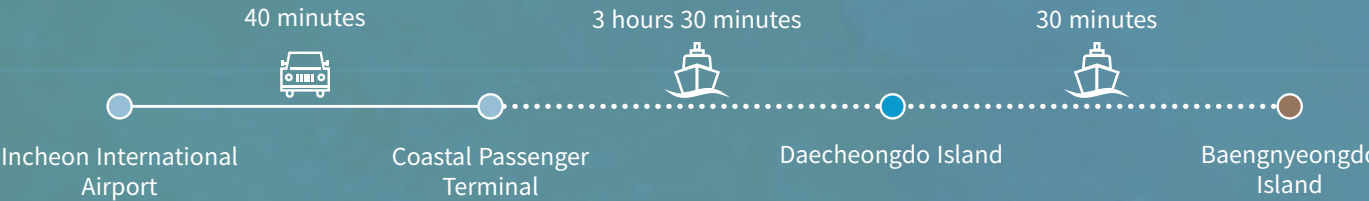
Deokjeokdo Island, Soyado Island, and Gureopdo Island



Shin-Shi-Modo Islands and Jangbongdo Island



Daecheongdo Island and Baengnyeongdo Island



THE SUSTAINABLE CO-EXISTENCE OF NATURE
AND HUMANS _ NATIONAL GEOPARKS

Travel Becomes a
Masterpiece at National
Geoparks

National Geoparks are designated areas with natural scenic beauty and proven geoscientific and geological importance. This is based on a national system to promote the economic development of local societies through geological education and tourism. These parks offer opportunities to personally investigate the beautiful geology and topology and observe the local plants and animals to learn about human culture, history, and archeology. Shall we explore and learn more about National Geoparks?

TRAVEL BECOMES
SUSTAINABILITY

Tip

Ten local residents are volunteering as docents devoted to the development of their local society: four volunteers are from Baengnyeongdo Island, three are from Daecheongdo Island, and three are from Socheongdo Island. They can not only explain features of Baengnyeong Daecheong National Geopark but also offer their services as guides on the local history, culture, economy, and environment from the origin of the region to its ecological evolution, and from the very beginning to the present human activities. Applications for the guided tours are available through the homepage, free of charge.



NATIONAL GEOPARKS

Two islands in Incheon, Baengnyeongdo Island and Daecheongdo Island, were designated as National Geoparks in 2019. Located just 12 km away from Hwanghae-namdo in North Korea, Baengnyeong Daecheong National Geopark is at the forefront of Korean defense in the Yellow Sea. Since the Korean War, the area has been the center of various control measures in defense of military confrontation. It was only recently that this area was found to contain some North Korean geological features that are not observed elsewhere in the South, which led to significant academic attention. Thus, the certifying process began in 2014, with recognition as a National Geopark coming in 2019. According to reports, rocks that are rarely found on the Korean Peninsula can be found here, and these are estimated to date back to the Neoproterozoic Era, about 700 million to 1 billion years ago. In addition, the oldest stromatolite in Korea was also found in this park. A total of 10 sites — five in Baengnyeong, four in Daecheong, and one in Socheong — are designated as geological heritage sites. The special features of Baengnyeong Daecheong National Geopark are: ▲ geological features with high academic value and which are rarities in South Korea; ▲ a clean and clear environment providing a good habitat and breeding sites for various living creatures; and ▲ a unique culture formed through isolation from the outside world, as a former place of exile and a military focal point.

* stromatolite: layered deposit formed by the growth of blue-green algae

+ Baengnyeong Daecheong National Geopark

Location: Baengnyeong-myeon and Daecheong-myeon, Ongjin-gun
Area: 66.83 km²
Date of Certification: July 10, 2019
Website: www.bdgeopark.kr

+ Geological Attractions

Baengnyeongdo Island	Daecheongdo Island	Socheongdo Island
Dumujin	Nongyeo Beach and Mia Beach	Bunbawi Rock and Stromatolite
Jinchon-ri Basalt	Okjuk-dong Coastal Sand Dune	
Sagot Beach	Seopungbaji Rock	
Kongdol Beach	Geomeunnang Coast	
Yongteurim Rock and Nampo-ri Geological Fold		



Source: Baengnyeong Daecheong National Geopark



Islands for the Enjoyment of Glamping and Caravan Camping:
Seonjaedo Island and Yeongheungdo Island
Putting a 'Comma' next to Your Heart
on Incheon's Treasure Islands



Seonjaedo Island

Seonjaedo Island, 1.97 km² in area and 10.9 km in length, is located in Seonjae-ri, Yeongheungmyeon, Ongjin-gun, Incheon. It is about 500 meters east of Daebudo Island. The island is connected with the inland via the Seonjae Bridge, which was opened in November 2000, and with Yeongheungdo Island to the west, via Yeongheung Bridge (opened in November 2001). There are 1,129 residents on the island, living in 547 households.

Hidden Story

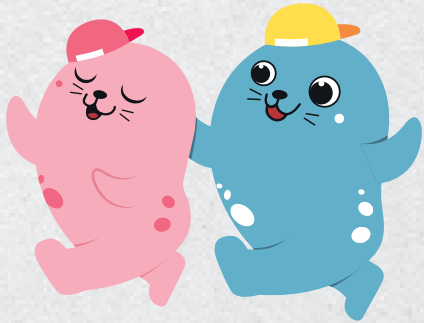
The island was known as 'Soudo' or 'Dogudo' from Goryeo through the late Joseon Dynasty and was renamed under its current name around 1871. The island got its previous name of 'Sou' or 'Dogu,' both meaning 'calf,' because people thought it was a 'calf island' following its mother, 'Yeongheungdo.' Another story regarding the origin of the island's name tells that legendary angels came down from the heavens to bathe in the clean water along the beautifully curved coast. This legend emphasizes the island's clear water and beautiful landscape.

Yeongheungdo Island

Yeongheungdo Island offers excellent accessibility as the only island to be reached by car from Incheon, apart from Ganghwado Island. Accessible by about a two-hour ride from the metropolitan area, the island attracts over three million tourists a year. To enter Yeongheungdo Island, visitors must cross Yeongheung Bridge on Seonjaedo Island, meaning visitors can visit two islands in one drive. Also favored for its 'glamping' (glamorous camping) and caravan camping facilities, Yeongheungdo Island has five campsites registered for tourism business, suited to your preference.

Hidden Story

The name 'Yeongheungdo Island' has a few special stories regarding its origin. One story is about Iknyeonggun, who, in the late Goryeo Kingdom, foresaw the kingdom's collapse and brought his family over by boat to flee from Gaegyeong, the capital of the kingdom. While traveling at sea, they were caught in a storm and barely survived. From this incident came the name of the island, in that Iknyeonggun's spirit (Yeong) was revived (Heung) by heavenly grace. Another story tells that, while hiding on Yeongheungdo Island, Iknyeonggun climbed up to Guksabong Peak, the highest peak on the island, and prayed to a supernatural spirit for the revival (Heung) of the Goryeo Kingdom. From 'Yeong' in his title 'Iknyeonggun' and his prayer for Goryeo's revival, 'Heung,' came the name of Yeongheungdo Island.



TREASURE ISLAND
+ Seonjaedo Island&Yeongheungdo Island

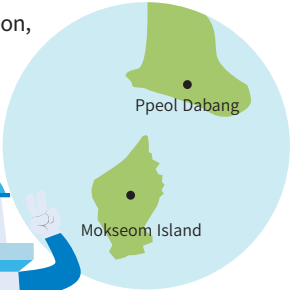
ATTRACTIONS

Seonjaedo Island

Mokseom Island
CNN’s choice for ‘Korea’s Most Beautiful Island’

From its dictionary definition, ‘Mokseom’ refers to an island close to the coast and connected to the inland through a sand bank or sand spit. Mokseom Island, part of Seonjaedo Island, is uninhabited and is opened by a path of sand twice a day with the sea’s parting. Unlike most other paths made of sloppy mud, the one-kilometer sea path connecting Seonjaedo Island with Mokseom Island is curiously made of hard sand. That is why it is possible to travel on this path on foot or even by car. It is probably due to a fascination for this special feature that CNN selected Mokseom Island off Seonjaedo Island as ‘Korea’s Most Beautiful Island.’

Mokseom Island
Seonjae-ri, Yeongheung-myeon, Ongjin-gun, Incheon



Cafes on Seonjaedo Island exude exotic ambience. Ppeol Dabang, in particular, became famous by word-of-mouth among tourists. The yard in front of the cafe comes under the influence of the ebb and flow, allowing visitors at low tide to take photographs swinging on a swing or holding surf boards under their arms inside the cafe. Enjoying the leisurely comfort over the gentle reggae music, you may feel as though you are actually on a Caribbean beach.

Ppeol Dabang
55, Seonjae-ro, Yeongheung-myeon, Ongjin-gun, Incheon

ATTRACTIONS

Yeongheungdo Island

Simnipo Beach
A Refreshing Beach Famed for its Korean Hornbeam Habitat

Simnipo Beach is located at the northern end of Yeongheungdo Island. This beach is characterized by its mixture of sand and fine gravel and boasts picturesque, splendid night views beyond the horizon. The name ‘Simnipo’ comes from its distance of 10(sip) ri, or about 4 km, from the port. On the backside of the beach, a habitat for Korean hornbeams surrounds the beach like a gigantic folding screen. About 100 years ago, the locals’ ancestors planted several species of trees to protect their harvests from the strong sea winds, but only the Korean hornbeams survived. That’s why the area is preserved as Korea’s only ‘Rare Coastal Plant Zone.’

Simnipo Beach
734 Nae-ri, Yeongheung-myeon, Ongjin-gun, Incheon

Yeongheung Iknyeonggun-gil
The Story of Yeongheungdo Island Flowing above the Sea

Yeongheung Iknyeonggun-gil refers to the 17 trekking trails designated by Yeongheungdo Island. The variety of courses offers options to choose from, according to your preference or available travel times. Hiking with a view of the beach is one nice option, while trekking around the island and enjoying the scenery is another recommended choice. Some top spots encountered along the courses include Yeombeotnarut-gil and Aehyanggamakke-gil, from which you can feel the island’s typical ambience to enjoy a grand view of the sea. Taking the course of Yeombeotnarut-gil in Nae 5-ri, you can look around a former wharf for a boat ride and a site where salt was produced, while, along the course of Aehyanggamakke-gil in Nae 7-ri, you can share the nostalgia of Koreans who long for their hometowns in the North.



Islands Offering the Gift of Walking under the Stars and Healing in the Composure of Deokjeokdo Island, Soyado Island, and Gureopdo Island
Putting a ‘Comma’ next to Your Heart on Incheon’s Treasure Islands



Deokjeokdo Island

There are 42 uninhabited and inhabited islands in Deokjeok-myeon. As many islands as there are, their range of diversity in terms of sights to see here has earned the nickname ‘King of Ongjin Beach.’ The greatest example of all is Deokjeokdo Island. It is the largest of the inhabited islands (Deokjeokdo Island, Soyado Island, Gureopdo Island, Baegado Island, Uldo Island, Jido Island, Mungapdo Island, and Seonmido Island), acting as a passage to all other islands through boat transfers. Deserving its fame, Deokjeokdo Island offers all forms of convenience for traveling, including trekking, swimming, fishing, lodging, and car rentals. In recent years, the island has been enjoying an increased number of tourists visiting by word-of-mouth for its beautiful landscapes and trekking courses.

Hidden Story

Up until Japan’s colonial occupation of Korea, Deokjeokdo Island was called ‘Deokmuldo Island,’ meaning ‘Big Water Island,’ but as its residents earned outsiders’ praise for being wise and virtuous, it came to be called ‘Deokjeokdo,’ or ‘Island of Virtue.’ With this name change, there was also the change from the administrative myeon to the present ‘Deokjeok-myeon.’ Reached in about one hour aboard a high-speed ship, Deokjeokdo Island is regarded as being both far away and close for inlanders. It has a length of 2 km, and its beach is 500 m wide.

Soyado Island

Soyado Island, 3.03 km² in area, is about 500 meters south of Deokjeokdo Island, with a sea channel separating the two. Upon the construction of the Deokjeok-Soya Bridge, Soyado Island was connected to Deokjeokdo Island, opening the possibilities for travel in a single journey. The island is 11.5 km in length, forming a south-north strip with a narrow width. There is a curve in the middle of the strip, before opening up widely again in a fan-shape to the south. Though smaller in area, it has a rough geography similar to Deokjeokdo Island and is nicknamed ‘Small Deokjeokdo Island.’ Around the 158-meter Guksabong Peak in the center of the island, other peaks are visible, with some higher and others lower than 100 meters, all forming a mountain range.



Tip

To reach Soyado Island, you can take a boat bound for Deokjeokdo Island at Incheon Port Passenger Terminal. From the terminal, it takes about one hour to get to Soyado. On a return trip to Incheon, you must arrive at Soyado Island’s wharf before the departure time, as boats arriving tend to depart immediately after passengers climb aboard to return to Incheon Port via Deokjeokdo Island.



Tip

As the boats sail on different routes on odd- and even-numbered days, you must also check carefully for boats bound for Gureopdo Island. What would be a 50-minute trip on an odd-numbered date can take two hours and 10 minutes on an even-numbered date.

Gureopdo Island

Gureopdo Island is located about 13 km to the southwest of Deokjeokdo Island. The name ‘Gureop’ comes from the island’s shape resembling a human stooped (‘Gu’) over to work (‘eop’). For its unpolluted natural environment, the island is called the ‘Korean version of the Galapagos’ or ‘the holy place for backpackers.’ Trekking slowly along Gaemeori Ridge at the center of the island, you will come upon views of the beautiful coastline whirling around the entire island. It will also be an amusing experience to encounter a herd of wild deer while camping in the hills or enjoying the magnificent rock formations on the beach. The island is already going viral through tales shared among trekking circles, so those planning a weekend trip are advised to book a boat at least one month in advance.

ATTRACTIONS

Deokjeokdo
Island

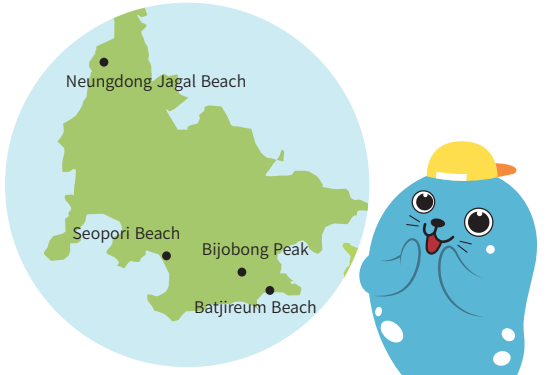


Neungdong Jagal Beach
A Beach Finding Harmony between Unusual
Stones, Flowers, and Trees

Neungdong Jagal Beach is covered with black pebbles, or ‘jagal.’ Beautiful pebbles of all sizes cover the entire beach. Walking barefoot on the pebbles can naturally produce the positive effects of acupressure, while also creating the unusual echoing sounds while stepping on the pebbles. Sleeping on this beach pillowed by the pebbles is a special privilege possible only at Neungdong Jagal Beach. Meanwhile, at the back of the beach, there are red rugosa roses on every sand hill, while black locusts populate the hills on the left-hand side. At the entrance to the beach, the thick reed forest adds to the exotic scenery that matches the beach’s pebbles. The beach at sunset creates literally the most magnificent landscape on Korea’s western coast.

Neungdong Jagal Beach

📍 Buk-ri, Deokjeok-myeon, Ongjin-gun, Incheon



Seopori Pine Tree Trail
Awarded in the ‘2010 National Beautiful Forest
Competition’

‘Seopori’ refers to ‘a port located to the west’ of Deokjeokdo Island. The scenery of the pine tree forest on Seopori Beach is magnificent enough to catch anyone’s eye. Lining the almost 500-meter-long sand dunes next to the beach, the pine trees look stable yet splendid, withstanding the weight of times past. There are walking trails that run between the trees that have stood in place for over 200 years, offering protection from the sea winds and providing a perfect site for forest bathing. In 2010, this site gained recognition by winning the first prize in the ‘National Beautiful Forest Competition’ in the field of Traditional Village Forests.



Seopori Beach

📍 Deokjeok-myeon, Ongjin-gun, Incheon
☎ +82-32-831-6623

Bijobong Peak
The Wondrous Scenic Points of Deokjeokdo Island

Deokjeokdo Island has a well-made trekking trail to match its pleasant beach. The most famed courses include the trails to Guksubong Peak and Bijobong Peak, with the former (at 314 m higher) said to offer a better outlook than the latter. At a relatively low height of 292 m, Bijobong Peak can be easily enjoyed by families making the trip with younger children, not requiring any special climbing gear or backpacks. Trekking about an hour through the trails thick with red pine trees, Korean hornbeams, and oriental oak trees, you can reach Bijobong Peak. Here you will find Bijojeong Pavilion, which offers a nice resting spot to sit at and take in the beautiful scenery. Descending from the peak, you will meet a side road off the main path that leads to Seopori Beach or Batjireum Beach.

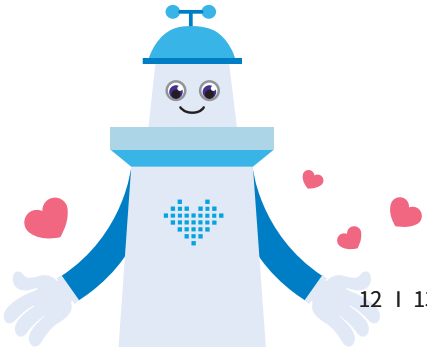


Bijobong Peak

📍 Seopo-ri, Deokjeok-myeon, Ongjin-gun, Incheon

Tip

Situated just below Bijobong Peak, Batjireum Beach is a rather small beach, but its quiet and mild slope offers a perfect place for a tranquil visit. On the beach itself, there is a wood-decked skybridge, which offers yet another perfect place for a walk.



ATTRACTIONS

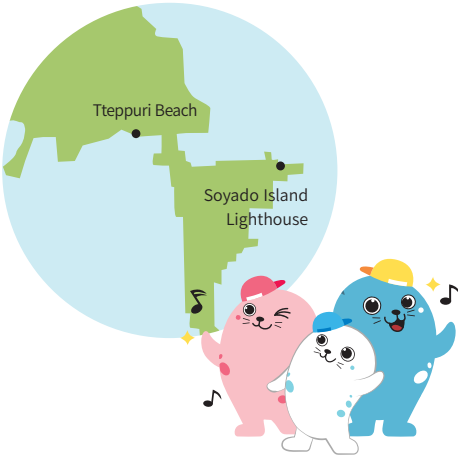
Soyado
Island



Soyado Island Lighthouse
Absorb Yourself in Lyrical Sentiments

If you crave absorption in some lyrical sentiments, there is a red lighthouse available for viewing from the Observatory on Soyado Island, perfect for enjoying the expanse of the sea in the background. This lighthouse is Soyado Island Lighthouse, built in 1985. It was originally built to direct safe passages for boats voyaging through the narrow canal between Soyado Island and the rocky islands in the east. Today, the warmth of the lighthouse, along with the gentle sea waves, offer healing charms for people wanting to escape the city’s hustle and bustle.

Soyado Island Lighthouse
Soya-ri, Deokjeok-myeon, Ongjin-gun, Incheon



Tteppuri Beach
The Site of Moses’ Miracle

‘Tteppuri,’ also called ‘Ttetburu,’ is named after the ‘ttipul’ or reeds that thrive there. The wide expanse of the thick forest forms a magnificent landscape, and its unpopulated environment allows you to appreciate the purity of nature. Another special feature of Tteppuri Beach is that it offers the experience of the ‘miracle of Moses.’ Soyado Island is one of the nine places in Korea where the sea itself parts to open a path. Soyado Island’s sea path is relatively short, but, compared to others, it opens a distinct path in the sea. The island also boasts exotic attractions aroused in harmony with the surrounding scenery.



Tteppuri Beach
Soya-ri, Deokjeok-myeon, Ongjin-gun, Incheon



ATTRACTIONS

Gureopdo Island

Sogureopdo Island
The Best of All Beauties from Gureopdo Island’s Coastal Topography

Sogureopdo Island is also called ‘Rabbit Island.’ The island receives compliments from geologists for Korea’s most beautiful coastal topographies — which they say are unrivaled in all of Korea. To get to Sogureopdo Island, you must wait until the sea ebbs from Keunmal Beach on Gureopdo Island. At ebb tide, a path is revealed on the sandy beach to connect to Sogureopdo Island. Sogureopdo Island’s topography is formed by ‘salt weathering,’ a process in the physical disintegration of rocks caused by the cold seawater meeting the warm air and salt in the water. Of all topographies formed by salt weathering, Sogureopdo Island boasts the stature of Korea’s largest in scope. Come and appreciate this rare mystery of nature.

Sogureopdo Island
📍 Gureop-ri, Deokjeok-myeon, Ongjin-gun, Incheon

Gureopdo Island Beach
A Clear and Blue Beach to Rest on

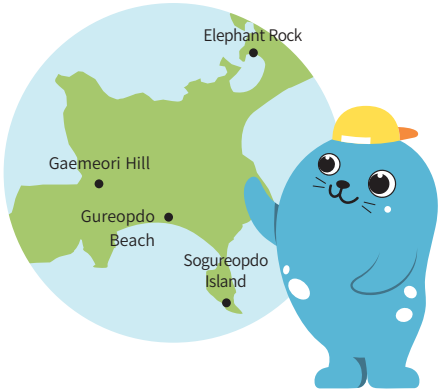
Gureopdo Island Beach stretches out along the wide spread of the clear and transparent sea. Even at low tide, there opens a stretch of sandy beach instead of a mud flat. The sand here is quite fine and soft, which leaves no footprints. The sea water is so clear that your toes are easily visible, even in waist-deep waters. Walking on the clear and clean beach touched by the waves for millennia, you will certainly recover composure in your heart.

Gureopdo Island Beach
📍 Gureop-ri, Deokjeok-myeon, Ongjin-gun, Incheon
☎ +82-32-899-2210

Gaemeori Hill
Attention, Please, All Backpackers!

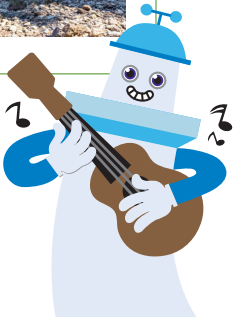
A place most favored by backpackers visiting Gureopdo Island is none other than Gaemeori Hill. As the whole island is filled with hills below 100 meters in height, you can enjoy beautiful open views in all directions from atop Gaemeori Hill. The scenery is coupled with a refreshing breeze, the beautiful twilight at sunset, and stunning stars in the night sky. It is also recommended to enjoy a pint of beer while resting on the hill during sunset or under the starlit sky. Just remember to bring down all your trash when returning.

Gaemeori Hill
📍 Gureop-ri, Deokjeok-myeon, Ongjin-gun, Incheon



Elephant Rock

Mokgimi Beach on Gureopdo Island is another place to observe unusual topographic features. Most notable is Elephant Rock. Don’t you agree that it really looks like an elephant? There are some, however, who claim it looks more like a big penguin or eagle.



Enjoy the Stirring Breeze off Incheon with Islands Perfect for Riding Bikes:
Jangbongdo Island and Shin-Si-Modo Islands

Putting a ‘Comma’ next to Your Heart
on Incheon’s Treasure Islands



Sin-Si-Modo Islands

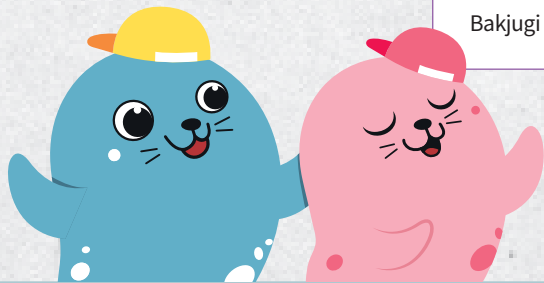
Sindo Island, Sido Island, and Modo Island are three ‘brother’ islands floating in a line between Yeongjongdo and Ganghwado Island. These three islands are connected by ‘island-connecting bridges,’ allowing for convenient travel on foot. This route was designated as the 53rd Haeannurigil, or Coastal Trail, in 2019. Most of these coastal trails overlap with bike-riding courses. Thus, the area has gained fame by word-of-mouth for its cycling options. This riding course follows a trail around Sindo Island. Bikes and motorized scooters can easily be rented on the island, meaning travelers arriving without bikes can still enjoy a ride, if they want.

Hidden Story

Shin-Si-Modo Islands can be covered in about three to four hours by motorized scooters, and each island offers a variety of attractions worth seeing.

Riding Courses on Shin-Si-Modo Islands

Sindo Island Wharf - Sindo Reservoir
- Sugi Beach - Haeannurigil (Coastal Trails) - Baemikkumi Sculpture Park - Bakjugi



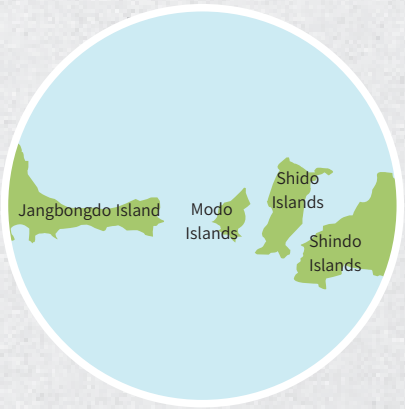
Jangbongdo Island

Jangbongdo Island, meaning ‘Long Peak,’ is a nice site for camping, hiking, and bike riding. One site that must not be missed out on while traveling to Jangbongdo Island is the ‘shellfish and wave-patterned rock.’ This rock is only revealed at low tide at the end of the beach from Yunokgol to Gamakmeori Observatory. The wondrous rock, as tall as an adult, and its wave-patterned features evoke awe beyond amazement. A favorite spot for camping on Jangbongdo Island is Ongam Beach. It is so loved by many because it is free of charge and yet comes equipped with all convenient facilities that are normally paid for, including restrooms, showers, and sinks for dishwashing. Enjoying camping at sunset, you can really feel your breath being taken away by the beautiful scenery.



Hidden Story

There are many stories about ghosts hanging around the beach on Jangbongdo Island, and one old story tells of meeting a ghost or seeing a ghost light that points out a good area for catching fish or even bringing wealth. It all sounds quite legendary; however, a recent discovery shows that ghost lights are produced from the element phosphorus, which gives off light from underwater nutrients, attracting fish to swarm to the area to eat these nutrients. Famed from long ago as a spot for fishing, Jangbongdo Island serves as one of the three largest fisheries in Korea.



TREASURE ISLAND
+ Sin-Si-Modo Islands&Jangbongdo Island



Attractions

Sin-Si-Modo Islands

Sugi Beach
A Sea with Serene Romanticism

Sugi Beach looks like a fortress curved into a bow. Your first sight upon arriving at the beach is of a heart-shaped signboard. This spot is famed as the shooting location for the drama ‘Full House.’ The waters around Sugi Beach are shallow and gently sloping, making it a nice and safe place to visit for families with small children. When the waters ebb away, and the wide mud flat is revealed, you can witness the traditional fishing method of Doksal, or stone weirs, which is a unique feature of Sugi Beach. Visiting the beach on a clear day, you can see Manisan Mountain on Ganghwado Island springing up right in front of you, as if you could actually reach out and touch it with your outstretched hand.

Sugi Beach
Sido-ri, Bukdo-myeon, Ongjin-gun, Incheon
+82-32-899-2114

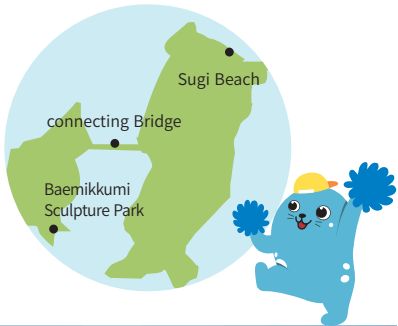
Baemikkumi Sculpture Park
A Village of Art Painted on the Sea’s Canvas

Baemikkumi Sculpture Park is located at the end of Modo Island and is a must visit for tourists of Sin-Si-Modo Islands. The name ‘Baemikkumi’ comes from the shape of the beach, which looks like ‘a hole in the bottom’ (mikkumi) of a ‘boat’ (bae). There is an interesting story to how the park was created. Sculptor Lee Il-ho was so fascinated with the beauty of Baemikkumi Beach that he relocated his studio there. As he displayed his sculptural works on the beach, one by one, it naturally became the present sculpture park. As visitors appreciated his sculptural works against the backdrop of the beautiful sea, word spread of this awesome set, later incorporating a cafe and vacation house

Baemikkumi Sculpture Park
41 Modo-ro 140beon-gil, Bukdo-myeon, Ongjin-gun, Incheon
+82-32-752-7215
Admission Fee: 2,000won

Ainy’s recommended spot for photos!

Bakjugi
Walking along the trail around Baemikkumi Beach, you will arrive at Bakjugi Beach. The name ‘Bakjugi’ comes from its shape resembling a bat (‘Bakjwi’). With the installation of a red structure with ‘Modo’ written on it, this has become another top spot for snapping photos.



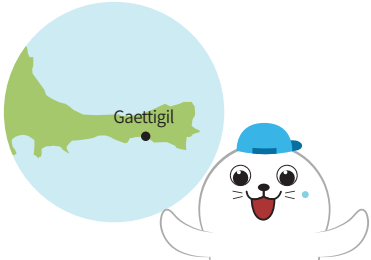
Shin-Sido Island-connecting Bridge
Connector of Islands

The 579-meter bridge connecting Sindo Island with Sido Island was constructed in 1992. Upon completion of the bridge, the two islands were connected into one, and anyone who wanted to visit was able to do so without having to wait for a boat. During the daytime, the water ebbs from above the bridge, revealing the open and wide mud flat. You can enjoy the rising tide along the beach in the afternoon, along with the beautiful sunset followed by the beautiful night scenery reflected on the water lit with street lights.

Shin-Sido Island-connecting Bridge
Sido-ri, Bukdo-myeon, Ongjin-gun, Incheon



Attractions
Jangbongdo Island



Tip
In 2003, the Ministry of Land, Infrastructure and Transport designated the 68.4 km² mud flat as a Wetland Conservation Zone. The mud flat of Jangbongdo Island makes up the largest production of sanghap (or baekhap) shellfish in Korea, which is the only shellfish suitable for eating raw. Visitors can enjoy mudflat experiences, picking up the various seafood on hand. As nature is well preserved here, you can also observe endangered birds, including plovers, inhabiting the area.

Gaettigil
The Trekking Trail between the Mud Flats

Gaettigil is originated from the pure Korean, ‘Gaetti,’ meaning the ‘trekking trail around an island between the mud flats’ that are revealed twice a day at low tide. Gaettigil on Jangbongdo Island earned fame for its wonderful harmony of the sky route, mountain routes, and sea routes. Gaettigil consists of seven trails: Sinseonnori-gil (8.2 km), Haneulnadeul-gil (3.2 km), Gubineomeo-gil (4 km), Jangbonghaean-gil (4 km), Yadalineo-gil (4.6 km), Handeulhaean-gil (3.5 km), and Jangbongbomul-gil (4.4 km).

Hidden Story

Arriving at the wharf on Jangbongdo Island, tourists are welcomed by a mermaid sculpture. There is an old legend around this mermaid sculpture. There once was a fisherman, a Mr. Choi, living on Jangbongdo Island. As luck would have it, he was having no success catching fish for some time and eventually became very poor. One day, he pulled up his net as usual to find a mermaid caught within! The upper body of the mermaid was of a beautiful woman, while the lower body had a fish’s tail. Looking into her eyes, Mr. Choi felt pity and, without saying anything, he let fall her back into the sea. After this incident, the story goes that Mr. Choi found his net filled with fish every day.

Islands of Peace with God-given Natural Environments:
Daecheongdo Island and Baengnyeongdo Island
Putting a ‘Comma’ next to Your Heart on
Incheon’s Treasure Islands

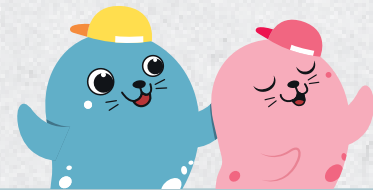
Daecheongdo Island

Daecheongdo Island is located close to Socheongdo Island on the way to Baengnyeongdo Island. All over the island, you can appreciate the spread of magnificent geological landscapes containing mysteries from the olden days. There are so many natural beaches all over the island that Daecheongdo Island may truly be called a ‘beach’ island. The beaches of Daecheongdo Island boast splendid scenery among the best sights of all Korean beaches. The clean sea waters that offer visibility deep under the sea, along with the howling of towering waves, make you feel as though you are actually somewhere on the east coast. Daecheongdo Island embraces the pure natural magnificent scenery to the extent of being called a ‘Treasure Island,’ and it is acclaimed as a perfect island for healing, thanks to its contactless natural purity.



Hidden Story

During the Joseon Dynasty, Daecheongdo Island was used mostly as a farm. In the 10th year of King Sejong’s reign (1428), a cattle ranch was made on this island, and, in late Joseon, Baengnyeong Farm, which supplied horses for wars, was relocated to the island. One of the magnificent views from Daecheongdo Island is that of ‘Malguri,’ and there are two stories as to the origin of its name: one is that there were many horses grazing there who accidentally fell off the cliff, and the other is that the topography looks like the back of a horse.

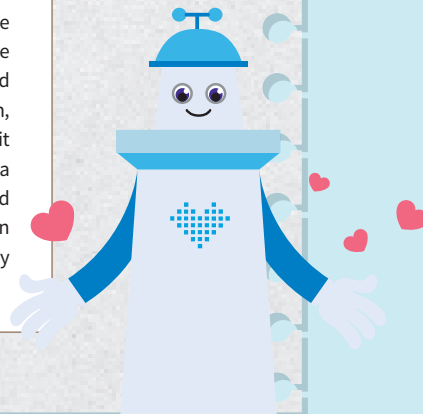


Baengnyeongdo Island

The northernmost island in South Korea, Baengnyeongdo Island is located just below the Military Demarcation Line to the south of Jangsangot, North Korea. On a clear day, North Korea comes into view in the distance. It takes four hours to reach the island from the Passenger Terminal at Incheon Coastal Wharf, but the natural ecology here is truly worth the journey. It has been drawing more attention since its certification as Baengnyeong Daecheong National Geopark in 2019. The island is located 191.4 km northwest of Incheon, with an area of 46.3 km² and a coast that is 52.4 km long, along with its highest peak at 184 m. There are 5,657 residents in 177 households on the island. Recently, the area between Hwadong and Sagot was reclaimed, making it the eighth largest, compared to its former rank of 14th.

Hidden Story

Baengnyeongdo Island’s original name was ‘Gokdo Island.’ Two stories are handed down regarding why the name was changed from Gokdo to the present Baengnyeongdo. The first story is that the name was changed to describe the island’s shape like a white ibis (Baek) with two wings spread out flying in the sky (Nyeong). The second story is that, a long time ago, in a village on an island in the Yellow Sea, a scholar fell in love with the district magistrate’s daughter. They promised to get married, but, learning this, the magistrate disapproved and sent his daughter off to an isolated island. The scholar looked everywhere for her, but to no avail. Then, one day, he saw a white crane in a dream, and the bird flew down with a white paper in its beak and gave it to him. Surprised, he woke up to find a piece of paper with an address written on it. The scholar went on a long journey to locate the written address. He took a boat in Jangsangot, came to Baengnyeongdo Island, and found the magistrate’s daughter! They then lived happily ever after. As the information of the island was given by a white crane (‘baek hak’), the island was named ‘Baekhakdo’ or ‘White Crane Island,’ which has eventually been altered to ‘Baengnyeongdo Island.’



ATTRACTIONS

Daecheongdo Island

Nongyeo Beach

A Beach that Looks Like the Bolivian Salt Desert (Salar de Uyuni)

Covering the northwestern coast of Daecheongdo Island, Nongyeo Beach is ‘carpeted’ with fine, hard sand. The sand is so firm that, even if you take heavy steps into it, there are no footprints left. The rocks around the sandy beach are quite unusual and magnificent, looking like old trees with grains on their surfaces. Walking along the immaculate beach that forms harmony with the blue sea and rocks, you cannot help but exclaim at the surrounding beauty, wondering if you are actually in paradise. Given its resemblance to the Bolivian salt desert, Salar de Uyuni, the sandy beach is nicknamed ‘Dae Uyuni.’ At low tide, one big beach is formed in combination with Miadong Beach next to it, creating even grander scenery.

Nongyeo Beach

📍 Daecheong-ri, Daecheong-myeon, Ongjin-gun, Incheon



Tip Box

Maebawi Observatory

Looking over the surroundings from Maebawi Observatory, you can see a hawk-looking rock that appears to be flying up with wings outspread. From old times, Daecheongdo Island was a habitat for duck hawks, a kind of Siberian peregrine falcon. That’s why there still remains a place named ‘Maemakgol.’

Seopungbaji Rock

Scenery with Wonders

The name ‘Seopungbaji’ means a rock that protects from the winds of the Yellow Sea with all its body. Surrounded by coastal cliffs, 60 to 70 meters in height, formed by the strong northwesterly winds, the area presents an absolutely magnificent view. The protruding coast and gigantic cliffs capture the eyes of all visitors. Another attraction is tasting fish freshly caught from the clean sea, which is why there is a constant stream of visitors arriving for fishing excursions along the rocks or on the seashore. The blue sea and sky, meeting the coastal cliffs, serve as a provider of healing just by themselves.

Seopungbaji Rock

📍 Daecheong-ri, Daecheong-myeon, Ongjin-gun, Incheon

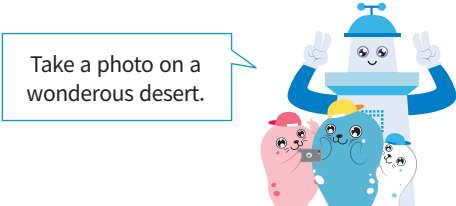
Okjukdong Sand Desert

Deep Blue Sea and Golden Sand Desert

Okjukdong is a special district because it offers special opportunities to see views of a desert! Seeing a sand desert on an island is itself quite amazing. That’s why it is called ‘the Sahara of Korea.’ Depending on the direction and strength of the wind, the sand dune, about 2 km long and 1 km wide, endlessly changes in shape. The large-sized coastal sand dune, sand beach, and long sand banks mingle together to form exotic scenery. It is loved by many tourists for its mysterious features.

Okjukdong Beach

📍 Daecheong-ri, Daecheong-myeon, Ongjin-gun, Incheon



Socheongdo Island Lighthouse

The Guard of the Blue Sea

Quite early in the history of Korean lighthouses, there was built a lighthouse on Socheongdo Island. After the first modern-type lighthouse was introduced on Palmido Island, Socheongdo Lighthouse was the second built (in January 1908). Located on the highlands at about 83 meters in altitude and at the western tip of Socheongdo Island, the lighthouse has been serving as a sea guide to ships sailing along the northwestern sea to the Chinese Shandong Peninsula and Dairen Region, Manchuria. With the new high-tech lighthouse built in December 2006, the old model has been put to rest, having completed its duties. The original sun clock used at the time of the first lighthouse is still in its place.

Socheongdo Island Lighthouse

📍 279 Socheongseo-ro, Daecheong-myeon, Ongjin-gun, Incheon

☎ +82-32-836-3104



TREASURE ISLAND
+ Daechongdo Island&Baengnyeongdo Island

ATTRACTIONS

Baengnyeongdo Island

Sagot Beach

The Naples Beach of Baengnyeongdo Island, Natural Monument No. 391

Generally, it is very tough work to walk along the beach at ebb tide; you can't walk without your feet getting stuck in the fine sand. However, Sagot Beach on Baengnyeongdo Island is quite different. Even a car or a motorbike can cross the sand without getting stuck. The sand here has very special geological and geological features. It is said that there are only two beaches in the world with these features: Naples Beach in Italy and Sagot Beach in Korea. Recognized for this rarity, the beach was designated as Natural Monument No. 391 on December 30, 1997.

Sagot Beach

● Baengnyeong-myeon, Ongjin-gun, Incheon

☎ +82-32-899-3510



Shimcheonggak Pavilion

A Space Recalling the Forgotten Filial Duty

Baengnyeongdo Island is the setting for the Tale of Shim Cheong, a figure from Korean representative folklore and one of the 12 sets of Pansori, a Korean traditional performance. Shimcheonggak Pavilion is located at a place from which you can view the sea of Indangsu, where she threw herself into the water, and Yeonbong Rock, where she was reincarnated. As the place offers good views of North Korea, it is frequented by those aching for their lost hometowns in the North. There are various materials on the Tale of Shim Cheong housed on the first floor, and a promotion center and place to rest can be found on the second. On a clear day, Jangsangot in North Korea comes into view here, as well.

Shimcheonggak Pavilion

● Jinchon-ri, Baengnyeong-myeon, Ongjin-gun, Incheon

☎ +82-32-899-3510



Kongdol Beach

A Beach Where the Waves Have Long Toiled Hard

How long it must have taken for the waves to strike again and again against these stones until they became such bean-sized balls! Kongdol Beach is very special in that it is filled with bean-sized stones ('kongdol') and not sand nor pebbles. In recognition of this rarity, the beach was designated as Natural Monument No. 392. Watching carefully, you may feel tempted to take some of these pretty shining 'beans' home with you. It is said that it takes millions of years for waves to make one bean-sized stone. As such, these stones, as worthy as jewels, made by waves toiling for such a long, long time, must not be brought away from this place but only enjoyed with your eyes during a memorable visit.

Kongdol Beach

● 1764-6, Nampo-ri, Baengnyeong-myeon, Ongjin-gun, Incheon

☎ +82-32-899-3403

Dumujin

God-made Magnificent Scenery

Dumujin on Baengnyeongdo Island was named such because it looks like military generals holding a meeting. The rocks consisting of Dumujin are sandstones, accumulated and hardened sands from one billion years ago, having been hardened and made tighter from deep under the ground. The magnificent scenery can be appreciated by arriving at Dumujin Port on Baengnyeongdo Island, by cruise ships offering views beyond your imagination, and from sea caves to sea arches and sea pillars — you name it!

Dumujin

● Yeonhwa-ri, Baengnyeong-myeon, Ongjin-gun, Incheon

Hidden Story

The spotted earless seals inhabit the sea off Baengnyeongdo Island as their main habitat, designated as Natural Monument No. 331, and they freely travel between North and South Korea. Earless seals served as the mascot of the 17th Incheon Asian Games in 2014, and as the symbol of Incheon.



INCHEON & PARTNERS