

Incheon Specialist Program

INCHEON
& PARTNERS

Places that Embrace Incheon's Past and Present

Open Port & Wolmido

Special spaces embrace the 100-year modern-day history of Korea,
the exotic landscapes and retro sentiments embedded in them.
For anyone yearning for the mystique of experiencing time travel,
the Open Port and Wolmido
can act as a time machine during your visit!

Time Travel

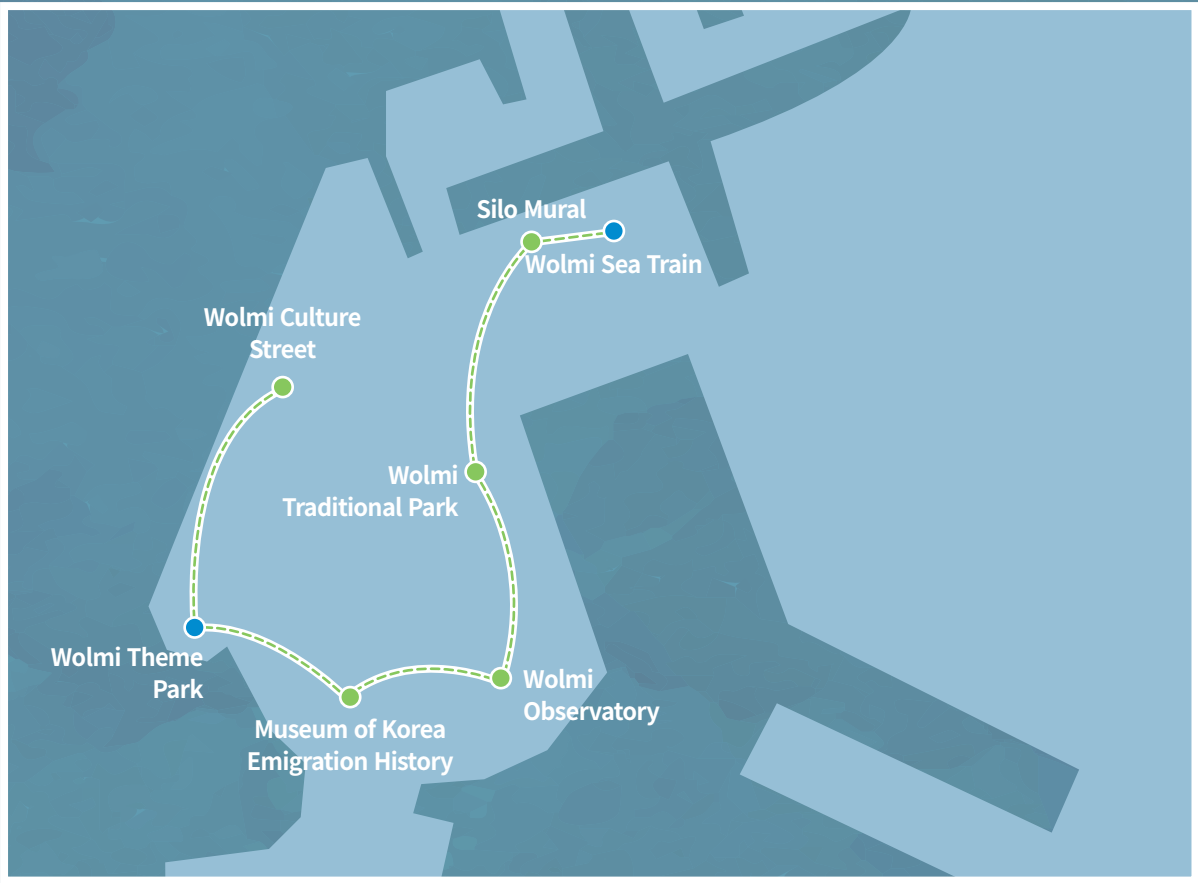


인천광역시
Incheon Metropolitan City

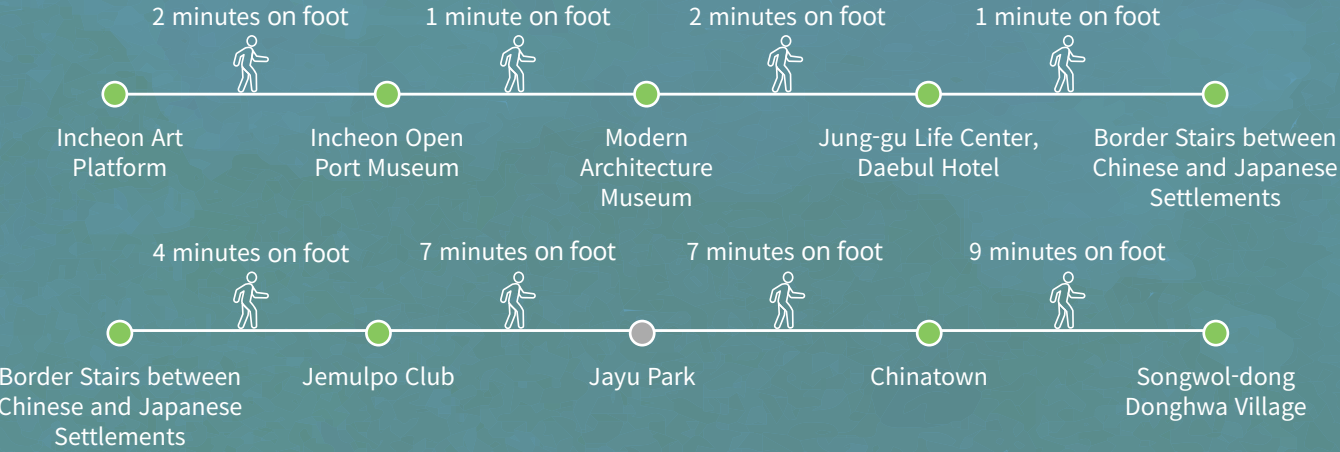


인천관광공사
Incheon Tourism Organization

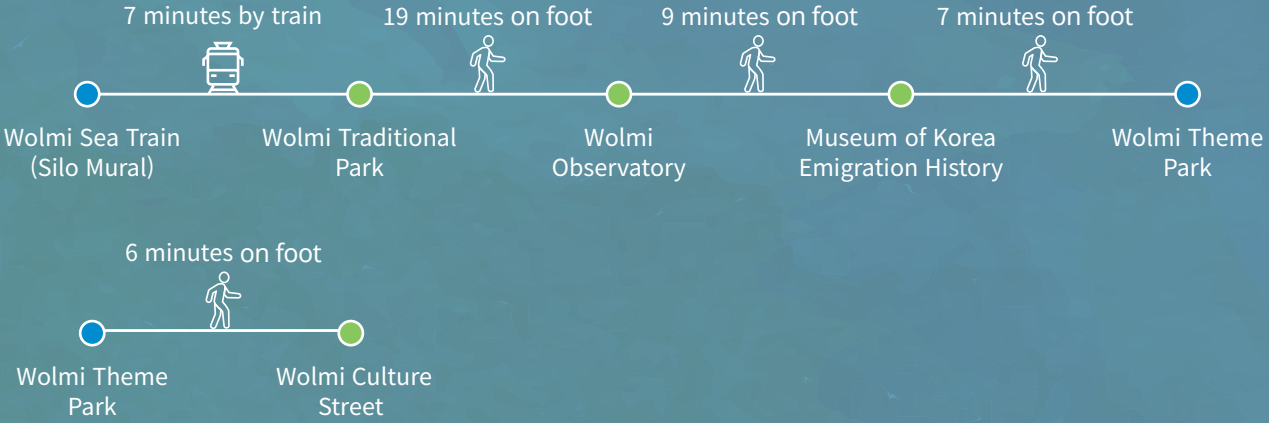
Open Port & Wolmido Road Map



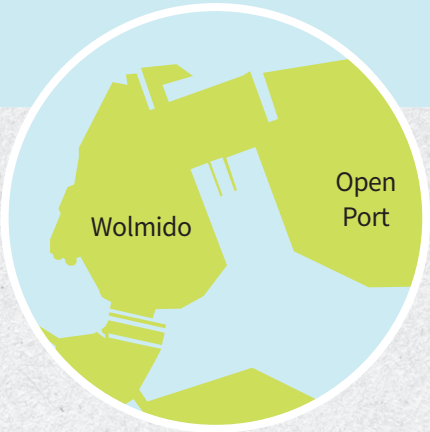
Open Port Line



Wolmido Line



Romantic Open Port & Wolmido
Running through Time in Places Rich
with ‘Memories’



Open Port

Incheon Open Port was the first port in Korea through which foreign civilization was received. As a natural consequence, Incheon has been able to flourish as an international city where diverse foreign cultures thrive together. Stepping into the Open Port area, one may feel as if the borders between the present and past have been blurred, immersing you in a historical time of the past, ranging from the late Joseon Dynasty through the Japanese colonial period. Each street here is actually a space rich in culture and history. Though it traces the sadness of Korea’s modern history, the city has taken on a renewed diverse identity with various museums, exhibition halls, and other facilities to form an essential site during any visit to Incheon.



Guided Tours of Modern Open Port

1-hour Course

Incheon Station (World Community Center) ▶ Chinatown ▶ Jjajangmyeon Museum ▶ Haean Catholic Church ▶ Daebul Hotel Exhibition ▶ Incheon Open Port Museum ▶ Incheon Open Port Modern Architecture Museum ▶ Incheon Art Platform

2-hour Course

Korean-Chinese Cultural Center ▶ Overseas Chinese History Hall ▶ Daebul Hotel Exhibition ▶ Incheon Open Port Museum ▶ Incheon Open Port Modern Architecture Museum ▶ Incheon Jung-gu City Hall ▶ Border Stairs between Chinese and Japanese Settlements ▶ Samgukji Mural Street ▶ Jjajangmyeon Museum ▶ Incheon Station

3-hour Course

Korean-Chinese Cultural Center ▶ Overseas Chinese History Hall ▶ Border Stairs between Chinese and Japanese Settlements ▶ Daebul Hotel Exhibition ▶ Incheon Open Port Museum ▶ Incheon Open Port Modern Architecture Museum ▶ Incheon Jung-gu City Hall ▶ Incheon City History Museum ▶ Jemulpo Club ▶ Jayu Park ▶ Statue of General Douglas MacArthur ▶ Samgukji Mural Street ▶ Jjajangmyeon Museum ▶ Chinatown (Euseondang Shrine) ▶ Donghwa Village

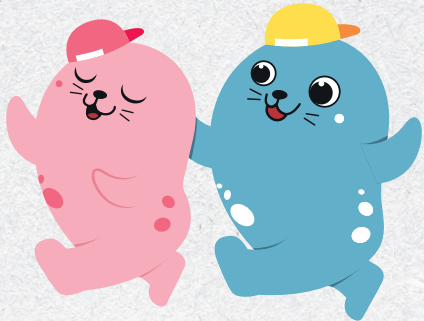
Wolmido

Since the birth of Wolmi Culture Street in July 1989, Wolmido has been serving as a venue for culture and art, meetings and exchanges, and performances and entertainment. It has now become a landmark for Incheon, easily springing to mind at the mere mention of Incheon. You will be surprised, however, to learn of the historical significance of this ‘entertaining touristic site,’ as it is known to many of us. It was home to the very first strategic point of the Incheon Landing Operation, which marked the point in the Korean War that turned near defeat into victory. With this in mind, how about browsing around through Incheon’s past to find all of the historic traces Wolmido has to offer?



Hidden Story

Wolmido (Moon Tail Island) is named in Chinese after its shape resembling a tail hanging off a half moon. The records list its former names as ‘Eoeulmido (漁乙未島·於乙味島),’ ‘Eomido (於味島),’ or ‘Jemuldo (濟物島).’ Judging from the resources, such as ‘Bibyeonsadeungnok (The Record of Landslide)’ and ‘Seungjeongwon Ilgi (Diaries of the Royal Secretariat),’ the present name ‘Wolmido’ is presumed to have come from ‘Eoeulmido,’ the Chinese transcription of the Korean ‘Eolmido.’ Overseas, the island was called ‘Roze Island’ around the time of Byeongin-yangyo (lit. Western disturbance of the Byeong-in year).
Wolmido was once an island 0.66 km² in area, with 1 km of coastline, and Wolmisan Mountain stood at 105 meters high. In the early 1920s, it was connected to the inland by a stone highway. It was part of Yeongjong-myeon, Bucheon-si, until the early 1900s, becoming incorporated to Incheon as of September 1, 1914.



A TIME CAPSULE OF KOREAN MODERN HISTORY
TRANSCENDING TIME AND SPACE
JAYU (FREEDOM) PARK

Travel Becomes History Jayu (Freedom) Park

Korea’s first modern Western-style park, Jayu Park was born by local Americans, British, Chinese, and other foreigners inhabiting the area who requested its establishment from a Russian engineer, Samatin. The park was a ‘hot spot’ at that time because of the nearby buildings being erected: Western-style houses, a first-time four-story summer villa for British residents, and a weather station. Enjoy a brief introduction to Jayu Park through its myriad of historical stories in this section.

Jayu Park

Jayu Park is Korea’s first modern park (built in 1888 — five years after the opening of Incheon Port). At that time, it was called ‘Gakguk (each country) Park’ or ‘Manguk (all countries) Park.’ It was later renamed as ‘Jayu (Freedom) Park’ to memorialize the freedom recovered with the successful strategic Incheon Landing Operation, or ‘Operation Chromite.’ At Jayu Park, there are many historic treasures to take in: the Korea-U.S.A. Centennial Monument (built in 1982), the Statue of General Douglas MacArthur (made in 1957) to commemorate his successful leading of Incheon Landing Operation, the Nature Preservation Charter Monument, Chunghon Tower, and Seokjeongru.

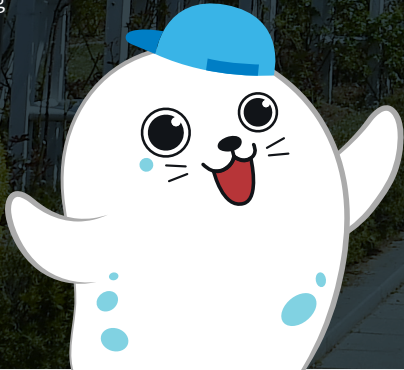
Every spring, Jayu Park hosts the Jayu Park Cherry Blossom Festival, where cherry blossoms are blown into motion by the gentle spring breeze, while in autumn, the park is famous for its beautifully colored leaves. In addition, it serves as a nice place to host events and writing contests, as a representative park of Incheon. For its beautiful landscape and significance, it is often utilized as a shooting location for TV shows and films, including the popular drama The Guardian.

The magnificent views of Incheon Port and Wolmido observed from the top of the park are also must-see items for tourists, and the night view of Incheon from the park is a favorite for young couples enjoying a romantic night out.

+
25 Jayugongwonnam-ro, Jung-gu, Incheon
☎ +82-32-760-7597
Open Hours: Open for 365 days.
Admission Fee & Parking: Free (Jayu Park Parking Lot)

Hidden Story

As much as for its long history, Jayu Park is also remembered as a venue of important events:
▲ ‘The 13 Provincial Representatives Meeting’ was held around March 1, 1919, with the decision to establish and proclaim the establishment of the Korean Provisional Government;
▲ Preparations were made to build the Liberation Commemorative Tower after Korean Liberation;
▲ The Chunghon Tower, built after the Korean War, is located here;
▲ A joint funeral was held to express wishes of comfort for the 505 soldiers from Incheon who sacrificed their lives;
▲ The Volunteer Soldiers Commemorative Monument and Customs Signpost Stones are indicators of historic traces.



The landscapes are so well maintained that they instill pride for Jayu Park.



Meander along the pleasant walking trail.



Relish the history of the park with pleasant leisurely enjoyment.



You may encounter meaningful sculptures as well.

PLACES TO
SEE

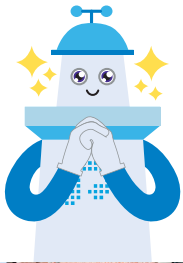
Open Port

Incheon Art Platform
History and Contemporary Culture
and Art in Co-existence

All across Haean-dong, Jung-gu, Incheon, where Incheon Art Platform is located, there are well-preserved buildings from the 1930s and 1940s, highly acknowledged and prized for their architectural value. Of these, 13 buildings, including the over 120-year-old warehouses and residences for companies, have been remodeled into the present cultural and artistic complex. Furthermore, various high causes were united to revive the city's historical and spatial features for more cultural use, giving rise to a Center for Living and Culture, comprised of creative studios, workshops, exhibition halls, performance halls, and resource rooms. The area around the Open Port is gaining high recognition for its successful urban reproduction by taking advantage of culture and art while preserving its history, with the result of positive influences upon activating the local economy.

- Incheon Art Platform**
- 📍 3, Jemullyang-ro 218beon-gil, Jung-gu, Incheon
 - ☎ +82-32-760-1000
 - 🕒 Open Hours: 09:00 - 18:00

♥ TV Drama Filming Locations
#The Guardian,
#Beauty Inside,
#It's Okay to Not Be Okay



Incheon Open Port Museum
Center of the History of Incheon Port Opening

Incheon Open Port Museum was formerly Japanese First Bank Incheon Branch, the only financial organ in Incheon at the time of the port opening, which was remodeled to re-open in 2010. Designated as No. 7 in the Tangible Cultural Properties of Incheon City on March 2, 1983, the museum serves as a venue for learning about modern Incheon after the port opening. A special feature of the museum is that all four exhibit halls house so many elements labeled as 'Firsts,' such as the railroad, church, postal system, and other relics and resources. For anyone interested in viewing various historical treasures from the landscapes of Incheon at the time of the port opening to modern civilizations, Incheon Open Port Museum is the place to visit.

- Incheon Open Port Museum**
- 📍 89, Sinpo-ro 23beon-gil, Jung-gu, Incheon
 - ☎ +82-32-760-7508
 - 🕒 Open Hours: 09:00 - 18:00 (Closed on Mondays)
 - 💰 Admission Fee: Adults KRW 500, Soldiers KRW300, Adolescents KRW 300, Children KRW 200



Incheon Open Port Modern Architecture Museum
A Place to Encounter Lost Modern Architectural
Buildings

Incheon Open Port Modern Architecture Museum, No. 50 in the Tangible Cultural Properties of Incheon City, was home to the Japanese 18th Bank Incheon Branch. Built in 1890, the one-story building still retains the typical Japanese roofing, vault, and doors to the vault in their original forms. Presently, the museum collects, organizes, and studies resources related to modern architecture built in Incheon after the port opening. Anyone interested in modern architecture will be fascinated by this museum.

- Incheon Open Port Modern Architecture Museum**
- 📍 77, Sinpo-ro 23beon-gil, Jung-gu, Incheon
 - ☎ +82-32-760-7549
 - 🕒 Open Hours: 09:00 - 18:00 (Closed on Mondays)
 - 💰 Admission Fee: Adults KRW 500, Soldiers KRW 300, Young Adults KRW 300, Children Free





Border Stairs between Chinese and Japanese Settlements

A Place Intact with the Traces of History

A ‘settlement’ refers to the area sectionalized for foreigners to live in while exercising their extraterritorialities. Incheon Open Port was the third in Korea, following Busan and Wonsan, to build such settlements. The Border Stairs between the Chinese and Japanese settlements were first built in the time of the Japanese settlements in 1883, followed by those built for residents from the Chinese Qing Dynasty in 1884. On either side of the stone stairs, there are two distinct landscapes to observe, with the Japanese influence on one side and the Chinese on the other.

Border Stairs between Chinese and Japanese Settlements

12, Songhak-dong 1(il)-ga, Jung-gu, Incheon

Jung-gu Life Center

A Space Overflowing with the Past and the Present

Korea’s first Western-style hotel, Daebul Hotel, opened in 1885. Daebul Hotel served to accommodate foreign residents in Korea, including the first American missionary, Rev. Henry Appenzeller. The hotel has now been transformed into Jung-gu Life Center in the reproduced three-story Daebul Hotel on the site of the old building — vacant since it was destroyed. The exhibition halls are comprised of Hall One, Daebul Hotel Exhibition Hall, and Hall Two Life History Museum. Hall One shows the exact replica of the original Daebul Hotel’s exterior, reproduced under advisory consultations from the Cultural Heritage Administration and modern architectural experts, and Hall Two displays exact scenes from life in Jung-gu during the 1960s and 1970s.

Jung-gu Life Center

101, Sinpo-ro 23beon-gil, Jung-gu, Incheon

+82-32-766-2202

Open Hours: 09:00 - 18:00 (Closed on Mondays)

Admission Fee: Adults KRW 1,000, Soldiers KRW 500, Adolescents KRW 700, Children Free



Jemulpo Club

25 Jayugongwonnam-ro, Jung-gu, Incheon

+82-32-765-0261

Open Hours: 09:30 - 17:30 (Closed on Mondays.)

Admission Fee: Free

Jemulpo Club

Korea’s First Social Club, Transformed into a Cultural Space

The Korean word for ‘club’ in Jemulpo Club, ‘Gurakbu,’ is the Korean transcription of the Chinese ‘club’ with Japanese pronunciation. Constructed in 1901, Jemulpo Club served as a venue for cultural exchanges between foreigners living in Incheon at the time of the port opening. After 1884, residential areas for different nationalities popped up around Incheon and, in 1891, a social club was formed among foreign residents, including those from the Chinese Qing Dynasty and Japan. This was Korea’s first social club for foreigners. In 2007, the club building was renovated to reproduce its original interior in order for visitors to have a peek inside the building at its prime.



TIME TRAVEL
+ Open Port & Wolmido

Chinatown
A Venue for Thematic Travel to Please the Five Senses

Chinatown is one of Incheon’s representative tourist attractions, visited by crowds of tourists every year. Its history dates back to 1883. Chinatown was formed naturally as Chinese visitors started to frequent the Open Port, and it still retains its Chinese culture and customs harmonized over the past 120+ years. There are a variety of Chinese elements that leave you wondering where you actually find yourself, ranging from the splendid red street ornaments to traditional Chinese street foods and the long arrays of Chinese restaurants, all providing a feast for your eyes and mouth.

Chinatown
12, Chinatown-ro 59beon-gil, Jung-gu, Incheon



Songwol-dong Donghwa (Fairy Tale) Village
A Fantastic Voyage to Immerse Yourself in Fairy Tales

Songwol-dong had been under the constant process of revival since the port opening. Entering the 1970s, however, visits from outside decreased and, as a way to revitalize the area, the whole village underwent a perfect transformation into a Fairy Tale (Donghwa) Village. Comprised of a variety of themed roads, the village offers various murals, buildings, and foods to match the different themes. An even more unique feature is that the street facilities have been repurposed and transformed into creative items: telephone poles are turned into the beanstalk from ‘Jack and the Beanstalk,’ while old gas meters now form the body of the Tin Woodman from ‘The Wizard of Oz.’ Across this three-dimensional Fairy Tale (Donghwa) Village full of wonders to discover, it is possible to recall one’s childhood and be childlike again.

Songwol-dong Donghwa (Fairy Tale) Village
17, Songwol-dong 3(sam)-ga, Jung-gu, Incheon
+82-32-764-7494
Admission Fee: Free



INCHEON
& PARTNERS



PLACES TO
SEE

Wolmido



Wolmi Observatory

- 📍 25 Jayugongwonnam-ro, Jung-gu, Incheon
- ☎ +82-32-765-0261
- 🕒 Open Hours
Summer (March - October): 05:00 - 23:00
Winter (November - February): 05:00 - 22:00
- 💰 Admission Fee: Free
(Except the fare for the Mulbeom (Seal) Car)

Wolmi Observatory
All of Incheon at a Glance

Citizens were forbidden from accessing Wolmisan Mountain for 50 years. Now, upon reaching Wolmi Observatory on the mountain top, the beautiful sunset over the Yellow Sea and Incheon Port can be enjoyed by all visitors. The glass-walled lookout on the third floor (23 meters above the ground) offers fantastic ambience at night, serving as a favored spot for romantic outings. The walls made wholly of glass allow for landscapes to be fully enjoyed from various viewpoints. A shuttle bus called the 'Mulbeom (Seal) Car' carries guests from the Information Office up to Wolmi Observatory.

The Museum of Korea Emigration History

- 📍 329, Wolmi-ro, Jung-gu, Incheon
- ☎ +82-32-440-4710
- 🕒 Open Hours
09:00 - 18:00 (19:00 on the last Wednesday of every month)
No tours on Mondays / Closed on January 1 and on days following public holidays
- 💰 Admission Fee: Free



Wolmi Traditional Park
For the Love of a Variety of Experiences

Wolmi Traditional Garden is the representation of a Joseon Dynasty garden. The park is loved by many for its long array of beautiful gardens and architectural structures. There is also the great advantage that a lot of experiential programs are available. A variety of prepared programs, ranging from traditional programs, such as martial arts performances and experiences, Hanbok (traditional Korean clothes) experience, and traditional toy making, along with ecological programs, including feeding the resident deer and sturgeons.

Wolmi Traditional Park

- 📍 89-1 Bukseong-dong 1(il)-ga, Jung-gu, Incheon
- ☎ +82-32-765-4133
- 🕒 Open Hours
Summer: 05:00 - 22:00
Winter: 05:00 - 23:00

The Museum of Korea Emigration History
A Place That Breathes Life into the History of Korean Emigration

On the 100th anniversary of the first official Korean emigrant's departure for Hawaii (in 2003), Koreans overseas and citizens of Incheon were united in their determination to commemorate Korean frontier spirit by establishing the Museum of Korea Emigration History. In June 2008, the Museum of Korea Emigration History, the first emigration museum in Korea, was opened as a venue for the lives filled with joys and sorrows of 7.5 million Koreans to be kept alive. Across the building's one underground and three above-ground floors, there are permanent exhibition halls, a resource room, media room, and other facilities to illuminate the history of Korean emigration. In this place, all Koreans, whether living in Korea or abroad, may share pride in being fellow Koreans.

Silo Mural
The World’s Largest Mural (Recognized by the Guinness World Records)

This mural is 168 meters long and 22 floors high. It is as large as roughly four soccer fields. As the largest outdoor mural in the world, Incheon’s Silo Mural has been recorded in the Guinness World Records. The mural is painted on silos used to store grain. For this mural, 22 artists were involved and 865,400 liters of paint were used. Transforming the old concept of a silo from a huge drab concrete building into a work of art, the mural was awarded at the Design Awards held in the USA and Germany.



Wolmi Culture Street
A Place Filled with Joy through All Four Seasons

The streets along the coast of Wolmido started to form in 2006. They now make up ‘Korean Culture Street,’ frequently visited by many tourists. One of the highlights of Wolmi Korean Culture Street is the graffiti art that has come to receive a certain degree of artistic appreciation. Though its distance is rather short distance, at 770 meters, the street nevertheless offers enough to capture pedestrians’ hearts for the wide open sea it sets out before them. As the ‘street for the youth’ representing Incheon, Wolmi Culture Street is a multi-themed street that includes elements of culture, art, performance, and a musical fountain ‘Water Screen,’ all in harmony.

Wolmi Culture Street
9, Wolmimunhwa-ro, Jung-gu, Incheon
+82-32-764-0842



Silo Mural
Pier 7, at the entrance to Wolmido,
Incheon Metropolitan City

TIME TRAVEL
+ Open Port & Wolmido

PLACES TO ENJOY

Wolmido

Wolmi Sea Train
Chosen among 100 Must-Visit Tourist Spots of Korea

As one of the 100 Must-Visit Tourist Spots of Korea, chosen by the Korea Tourism Organization for 2019, the Wolmi Sea Train is Korea’s longest urban tourist monorail, circulating all around Wolmido, Incheon. Riding along the 6.1 km course for a round trip, you can enjoy the view of the landscape of Wolmido and Incheon Inner Port, the Yellow Sea, and even the far-off Incheon Bridge, making it one of Incheon’s masterpiece tourist attractions.

- Wolmi Sea Train**
- 📍 269, Jemullyang-ro, Jung-gu, Incheon
 - ☎ +82-32-450-7600
 - 🕒 Operating Hours
Weekdays: 10:00 - 18:00 / Weekends: 10:00 - 21:00
 - 💰 Admission Fee
Adults: KRW 8,000 / Adolescents (13-18 years old): KRW 6,000
Seniors (65 years old or older): KRW 6,000
Children (3 years old or older): KRW 5,000
People with Disabilities/Men of National Merit: KRW 4,000



Wolmi Theme Park
A Place Offering Pleasure 365 Days a Year

Opening in 2009, Wolmi Theme Park is perfectly equipped with ‘major thrilling attractions,’ such as the Viking, and Ferris Wheel rides. Emerging as a tourist attraction for Incheon, the park has been featured on various broadcasts. As dusk comes in and the lights are lit, one after another, it is wonderful to enjoy the romantic nightscape unique to Wolmido.

- Wolmi Theme Park**
- 📍 81, Wolmimunhwa-ro, Jung-gu, Incheon
 - ☎ +82-32-761-0997
 - 🕒 Operating Hours
Weekdays: 10:00 - 21:00 / Weekends: 10:00 - 23:00
 - 💰 Admission Fee: Free
One-time Pass: Children: KRW 4,000 / Adults: KRW 5,000
One-day Pass (Children/Adults): KRW 30,000



PLACES TO ENJOY

Open Port

Sinpo International Market
Incheon’s First Modern Market to Be Open 365 Days a Year

The vegetable market in Sinpo-dong from the end of the 19th century served as the origin of present-day Sinpo Market. Even today, some traces of the old vegetable market are seen, from sculptures on display or in the corners of stores that have managed to stay in business all this while. Not simply the birthplace or home of Jjolmyeon (spicy chewy noodles), Sinpo International Market is famed for its variety of delicious foods. It is the first modern market in Incheon to be open 365 days a year and the representative market of Incheon, dating back 100+ years to the opening of the port.

- Sinpo International Market**
- 📍 11-5, Uhyeon-ro 49beon-gil, Jung-gu, Incheon

Hanji (Korean Paper) Handicrafts
Experiencing Hanji with a Sense of Warmth

There are a lot of items that bring home the sense of Korean tradition in the Open Port. Of all such items, how about experiencing Korea’s traditional paper, ‘Hanji’? For this, a variety of experiences are available at Hanji handicraft workshops, from hand-mirror making to constructing large-sized lamps. Hanji craftwork products are also available for purchase at the gallery.

- Hanji (Korean Paper) Handicrafts**
- 📍 14-1, Uhyeon-ro 35beon-gil, Jung-gu, Incheon



Fashion during the Port Opening Period
Enjoying Fashion Trends from the Port Opening Period on Gaehang-ro

At the Open Port, there is a place that rents clothes that were in fashion during the time of the port opening period. The ‘Self Studio’ offers itself for visitors to use, free of charge. Browsing around Gaehang-ro while dressed in clothes to match the period will present you with an even more special experience to remember.

- Fashion during the Port Opening Period**
- 📍 93, Sinpo-ro 27beon-gil, Jung-gu, Incheon



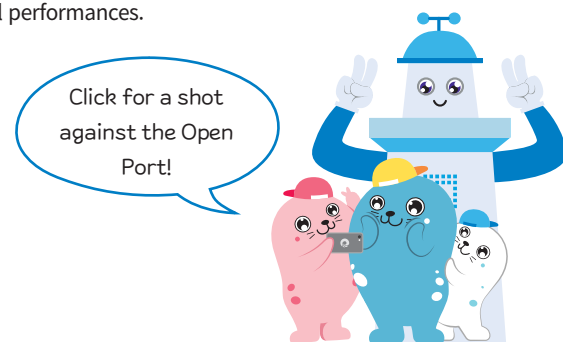


FESTIVALS

Open Port

Incheon Open Port Culture Night Chosen among the 100 Must-Visit Night Tourist Spots of Korea

Held against alleys with exotic street scenes and beautiful landscapes under exquisite lighting, Incheon Open Port Culture Night attracts tens of thousands of visitors every year. There are also various programs to enjoy: Walking Exploration of Cultural Heritage, Experiencing Intangible Cultural Heritage, Experiencing the ‘Greatest’ and ‘First’ in Incheon, Art Flea Market, and cultural performances.



Where to Stay



Best Western Harbor Park Hotel

217, Jemullyang-ro, Jung-gu, Incheon ☎ +82-32-770-9500

Benikea Wolmido The Bliss Hotel

268, Wolmi-ro, Jung-gu, Incheon ☎ +82-32-764-9000

Hotel Wolmido

274, Wolmi-ro, Jung-gu, Incheon ☎ +82-32-420-8901

Leto House

6, Sinpo-ro 46beon-gil, Jung-gu, Incheon ☎ +82-32-777-3998

No. 25 Hotel Incheon Sinpo

14, Sinpo-ro 45beon-gil, Jung-gu, Incheon ☎ +82-32-761-1525



Foods to Relish

Gaehang-ro Cafe Street Dressed up in New Styles

On the streets of the Open Port, there are cafes housed in old building structures ‘dressed up’ in new styles and exuding strong exotic moods. The old icehouse of the past, a 120-year-old Japanese house, or a warehouse renovated into cafe - all are emerging as ‘hot spots’ to welcome young people.



Sinpo Dakgangjeong (Sweet Crispy Korean Fried Chicken) Never-changing Taste through Changing Rivers and Mountains

A trademark of Sinpo International Market is, needless to say, Sinpo Dakgangjeong (sweet crispy Korean fried chicken). This Dakgangjeong store is still loved by so many people for its consistent taste over the past 70+ years of history. The moment you step into the market, you can feel the pungent aroma of chicken frying in some unseen place. Once you have taken your first bite, you will never forget the distinct crispiness felt in your mouth.



Jjajangmyeon The Birthplace of Jjajangmyeon

In Chinatown, Gonghwachun was the first Chinese restaurant to serve Jjajangmyeon in Korea. The restaurant has now been transformed into the JJajangmyeon Museum, exhibiting how Jjajangmyeon was born and grew to become so loved across Korea. After viewing all the many exhibited items at the Jjajangmyeon Museum, how about trying a bowl of Jjajangmyeon in one of the Koreanized Chinese restaurants lined up throughout Chinatown?

Grilled Clams Enjoy the Beach under a Breathtaking Sunset

Another attraction of Wolmido that cannot be denied is grilled clams. Appreciating the beautiful setting sun over the Yellow Sea before Wolmi Culture Street, anyone will be happy to sit down to fresh grilled clams.

INCHEON & PARTNERS